



Using Eclipse in Teams

Massimo Felici

IF-3.46 0131 650 5899

mfelici@inf.ed.ac.uk

Overview

- Connecting Eclipse to a *CVS* Repository
- Examining the *CVS* Repository
- *CVS* Branches
- Storing a Project in a *CVS* Repository
- Other *CVS* operations
- Team Synchronizing view in Eclipse



Connecting Eclipse by CVS

Add CVS Repository

Add a new CVS Repository to the CVS Repositories view

Location

Host: STEVE

Repository path: c:\repository

Authentication

User: Steven Holzner

Password:

Connection

Connection type: pserver

Use Default Port

Use Port:

Validate Connection on Finish

Finish Cancel

Host: cvs.inf.ed.ac.uk

Repository path:
/disk/cvs/<seoc??>

seoc01, seoc02,
Seoc03 and seoc04

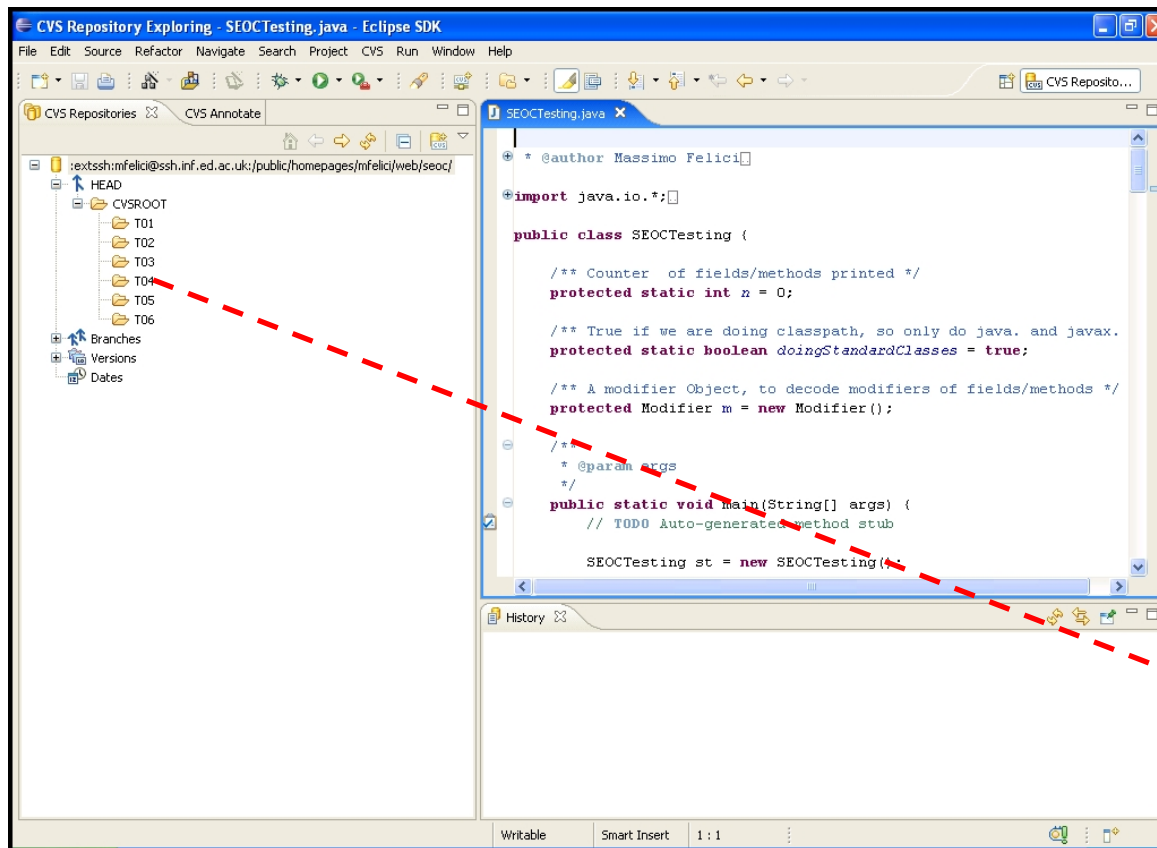
Your DICE authentication

Connection type: extssh

Examining CVS Repositories

Open this perspective by selecting:

1. Window
2. Open Perspective
3. Other...
4. CVS Repository Exploring



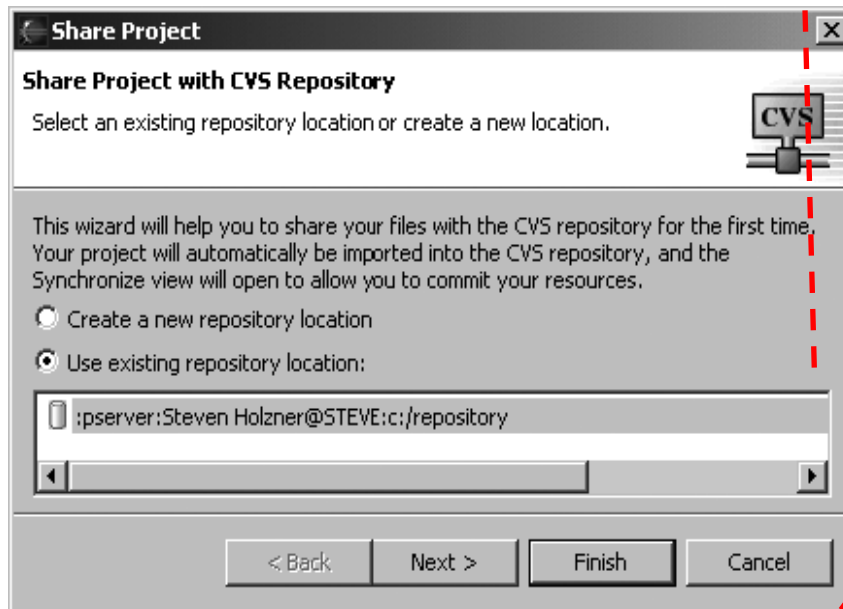
**CVS Branches
(e.g., O, P, D)**

CVS Branches

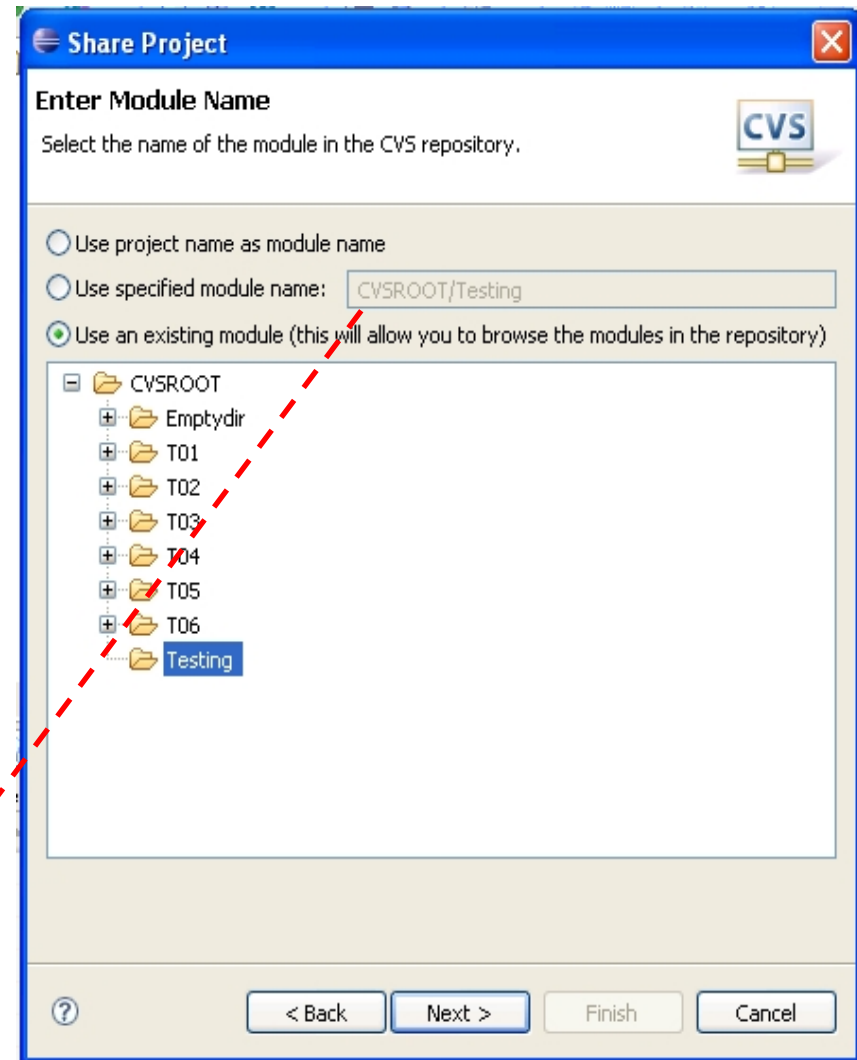
- CVS also enables you to create new branches in your code's development tree
- Such branches can act as alternate streams of development for your code
 - you might want to develop a new version of your code that uses prompts in another language
 - You might want to organize you development in different teams/groups, e.g., **O**, **P** and **D**

Storing Projects

Use existing repository location:
/disk/cvs/<seoc??>



Use an existing module, e.g., "O",

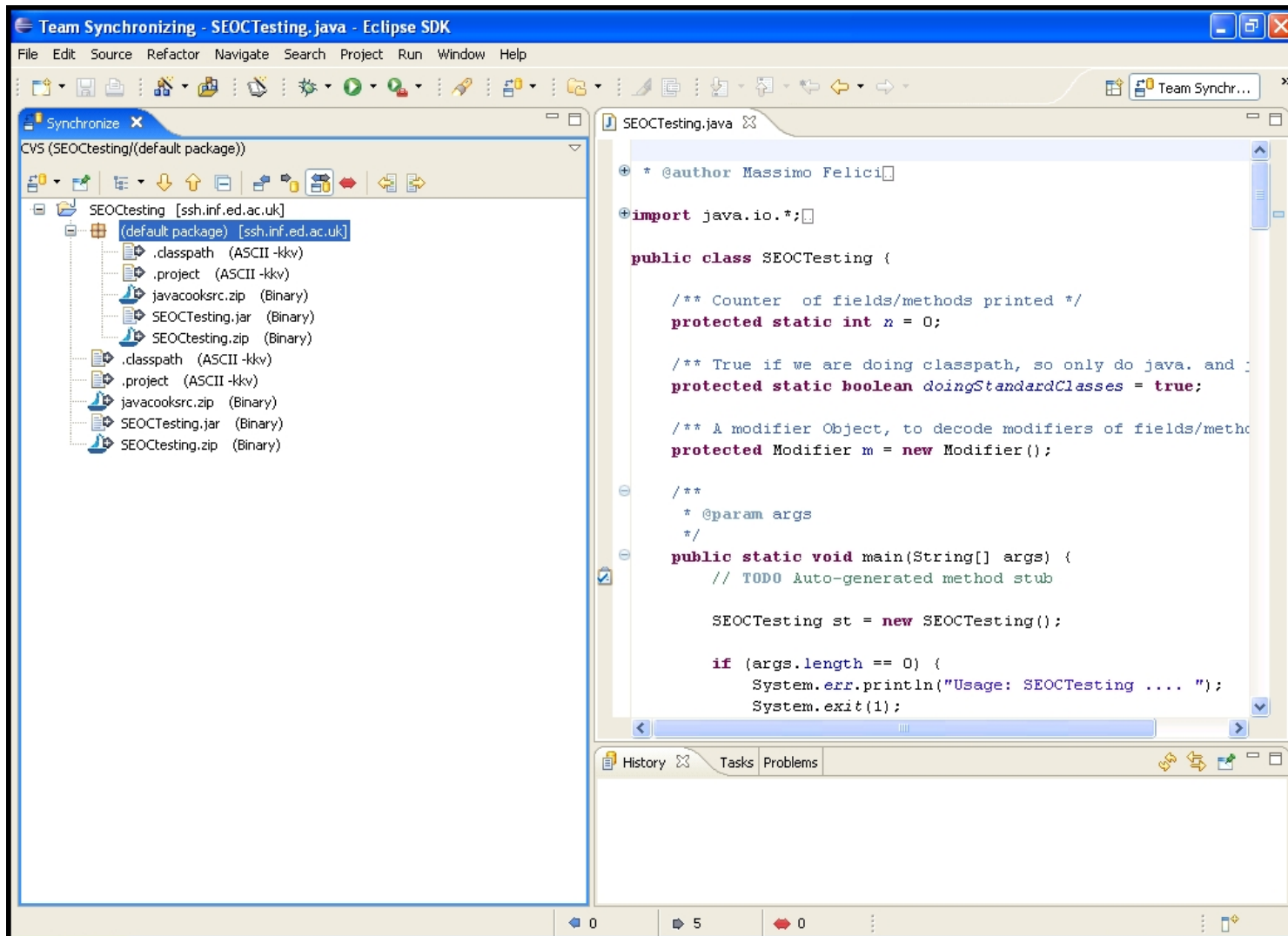


Other CVS operations

- Committing files
- Checking projects out of a CVS repository
- Updating you code from a CVS repository
- Synchronizing your code with the CVS repository



Team Synchronizing view in Eclipse



Summary

- Using Eclipse in Teams

