



New GPU Cluster

Iain Rae

Computing Officer

School of Informatics



2016 5 nodes, 20 GPUs plus Google cloud





Oct 2017 over 300 students in MLP

- No Google Cloud
- Normal cluster procurement (6+ months)
 - Requirements capture & Design
 - Install racking/network/power
 - Equipment tender/bid/selection process
 - Build, install, acceptance test, tune scheduler and filesystem
 - Beta test program
 - commission





Oct 2017 over 300 students in MLP

- No Google Cloud
- Normal cluster procurement (6+ months)
- Requirements capture & Design
- Install racking/network/power
- Equipment tender/bid/selection process
- Build, install, acceptance test, tune scheduler and filesystem
- Beta test program
- commission

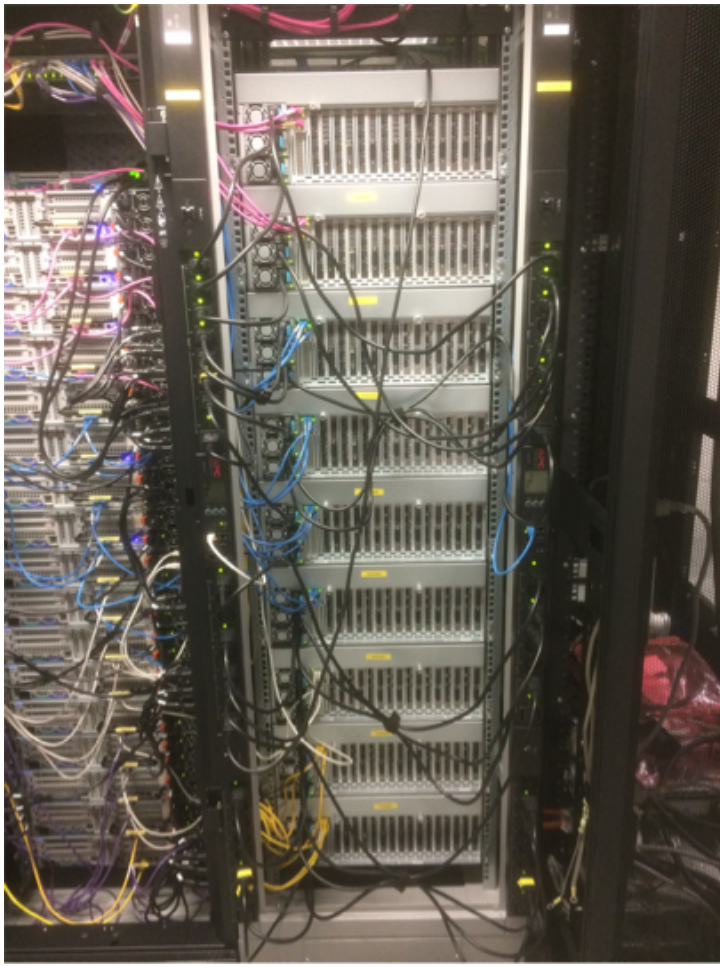


Dec 2017 “It would be nice if all students had their own GPU”

- This Time it's a bit different
 - Requirements capture (4 hours), use existing filesystem (gluster), lower power GPUS 8 to a box
 - Fit cluster in existing spaces where we have power (3 racks on 3 sites)
 - Reduce procurement process down to 2 weeks for nodes
 - Place order 20/12/2017
 - Nodes start to arrive 19/1/2018, first power on 20/1/2017



Rack #1 (nodes 1-9)





Node with 8 GPUs

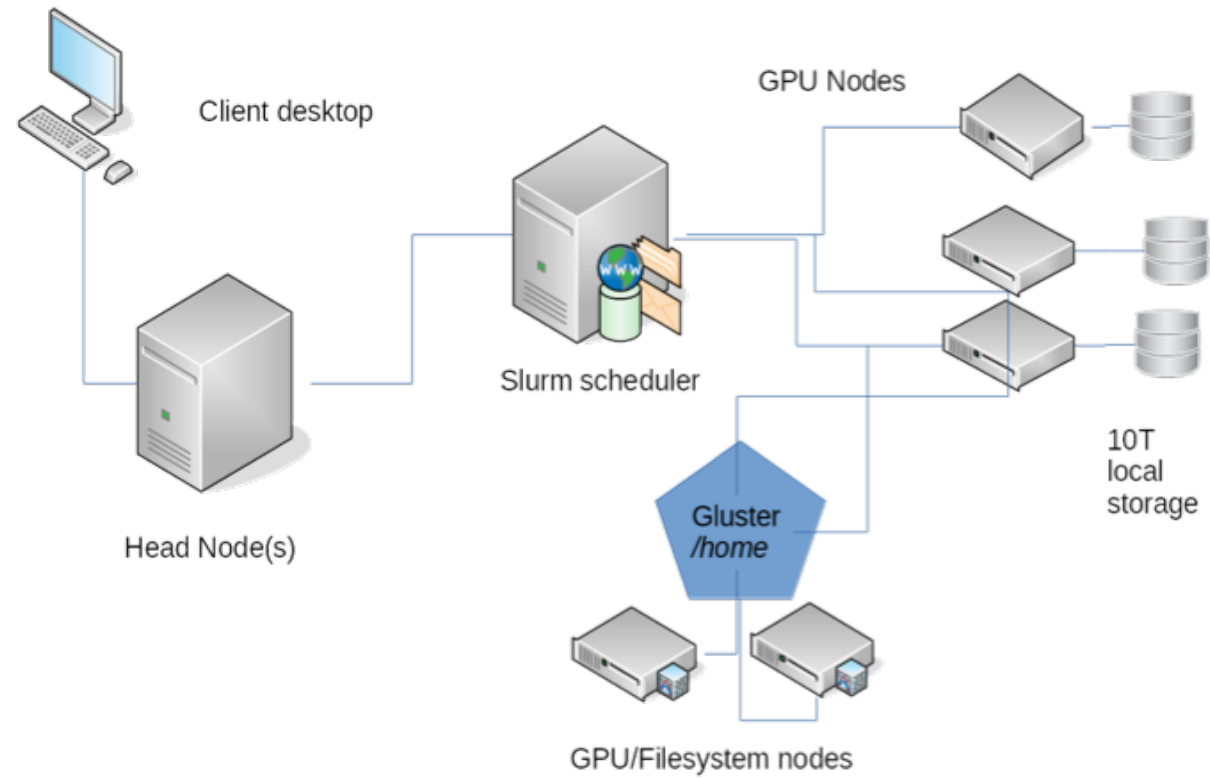




Rack 2



Cluster Organisation





Oct 2017 “over 100 students”

- Normal cluster procurement (6+ months)
 - Requirements capture & Design
 - Install racking/network/power
 - Equipment tender/bid/selection process
 - Build, install, **acceptance test, tune scheduler and filesystem**
 - **Beta test program**
 - commission



Likely Problems

- Hardware is new and unknown
- Filesystem is reliable but not speedy (Transit van)
 - Slow on metadata queries
 - Think about using libgfapi
- Things will break at the joins





Problems/Issues

- Contact support

- <https://www.inf.ed.ac.uk/systems/support/form/>

- Have screen captures, logs, example code when reporting issues.

- Feel free to cc me in the answer

- iainr@inf.ed.ac.uk

- Help desk at AT 5.08 2pm