

Our general setting

- A finite **set** of things
(which may be imaginary)



何も本物じゃない。
NOTHING IS REAL



Ceci n'est pas une pipe.



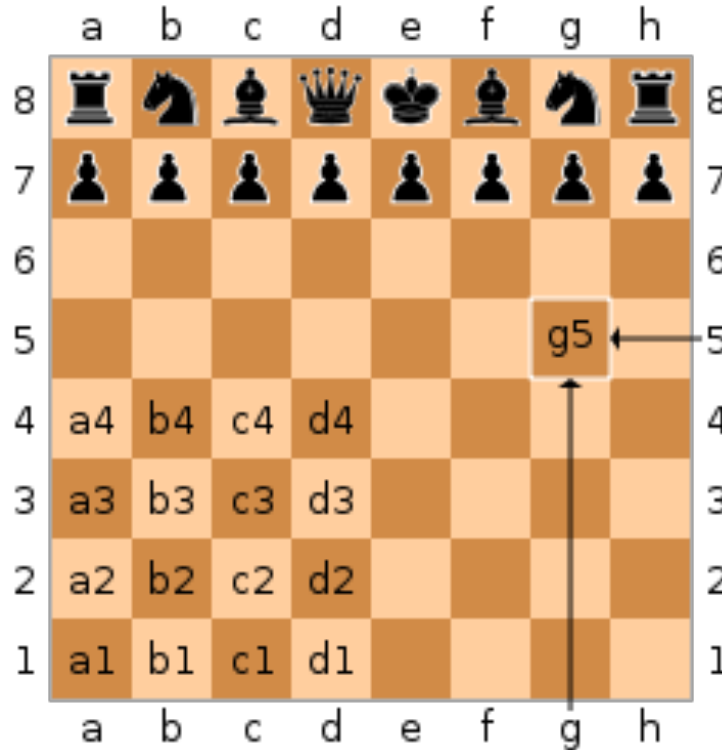
INF1A

binary questions



What is chess?

- 32 Chess Pieces
- 8x8 Chess Board
- Positions
- Moves
- Game



We can replace all of this by symbols.

In principle you can play chess in your head.

In practice, some people can actually do this!

Nevertheless, some computers can now play chess better than any human.



INF1A

encodings

Chess is just a game.

Logic allows us to convert many real-world problems into games, a bit like chess — using symbols to replace the various entities involved and to describe their interactions.

Computers, much better than humans, play these games to solve our problems.

You don't need a computer to do logic, any more than you need a chess set to play chess.

However, a computer can help you to learn logic, just as a chess board — even a virtual chess board — can help you to learn chess.