

DO NOT SCALE THIS DRAWING.

Notes

- DO NOT SCALE FROM THIS DRAWING, IF IN DOUBT, REQUEST FURTHER INFORMATION.
- THIS DRAWING SHALL BE READ IN CONJUNCTION WITH THE MAIN CONTRACT CONDITIONS, THE BUILDING SERVICES SPECIFICATIONS AND SCHEDULES, THE ARCHITECT'S AND STRUCTURAL ENGINEER'S DRAWINGS.
- REFER TO THE ARCHITECT'S DRAWINGS FOR DETAILS OF ALL SETTING OUT INFORMATION. NO DIMENSIONS SHALL BE MEASURED FROM THIS DRAWING.
- REFER TO THE ARCHITECT'S REFLECTED CEILING PLANS FOR THE SETTING OUT OF ALL SOFFIT MOUNTED SERVICES COMPONENTS.
- REFER TO THE ARCHITECT'S DRAWINGS FOR DETAILS OF ALL BUILDING COMPARTMENTATION. ALL SERVICES SHALL BE FIRE SEALED USING THE APPROVED PENETRATION DETAIL, FULLY IN ACCORDANCE WITH THE COMPARTMENT RATING.
- ALL OUTLETS IN CONCRETE WALLS AND COLUMNS TO HAVE CONDUIT AND BACK-BOXES CAST IN AS ARCHITECT'S AND STRUCTURAL ENGINEER'S DRAWINGS.
- FLOORBOX LOCATIONS AND NUMBERS IN OFFICE AREAS ARE INDICATIVE ONLY AND SHALL DEPEND ON FINAL ROOM LAYOUTS.
- ALL CONTAINMENT IN FLOOR VOID UNLESS OTHERWISE STATED

LEGEND

- DISTRIBUTION BOARD
- END FEED FOR BUSBAR
- DATA AND POWER HUB C/W FLOORBOX LIO IN FLOOR TILE ABOVE
- HEAVY DUTY STEEL FLOORBOX WITH STONE INSERT TO MATCH FLOOR
- 3 COMPARTMENT FLOORBOX FOR SUSPENDED FLOOR. INSERT TO MATCH ARCHITECTURAL FINISH.
- TRAY
- 2-COMPARTMENT TRUNKING. SIZE AS INDICATED
- 2-COMPARTMENT TRUNKING IN C/V. SIZE AS INDICATED
- 3 COMPARTMENT SCREENED TRUNKING. SIZE AS INDICATED
- 3 COMPARTMENT DADO TRUNKING

NOTE
OMITTED FOR CLARITY IS
100x50mm 2-COMPARTMENT
TRUNKING IN NON-GLAZED
CORRIDOR PARTITIONS,
CARRYING POWER TO OFFICE
LIGHTING. REFER TO
0312(22)202.

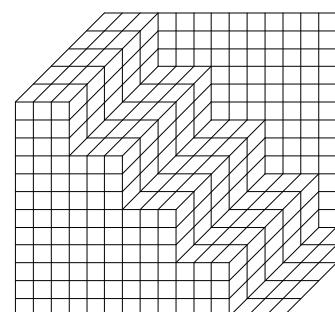
A	ISSUED FOR TENDER	MAR 05	REM	APF
0	ISSUED FOR BILLING	JAN 05	REM	APF
Rev	Description	Date	Dm	Chd

TENDER

Status of drawing

Four Winds
Pacific Quay
Glasgow G51 1DY

Tel: +44 (0)141 419 3000
Fax: +44 (0)870 787 4146
Email: 008209@burohappold.com
Web: www.burohappold.com



Buro Happold
Consulting Engineers

Architect **Bennetts Associates / Relach and Hall**

Project **The University of Edinburgh - Potterrow**
Second Floor - Phase 1
Containment
General Arrangement

Scale: A1 1:125

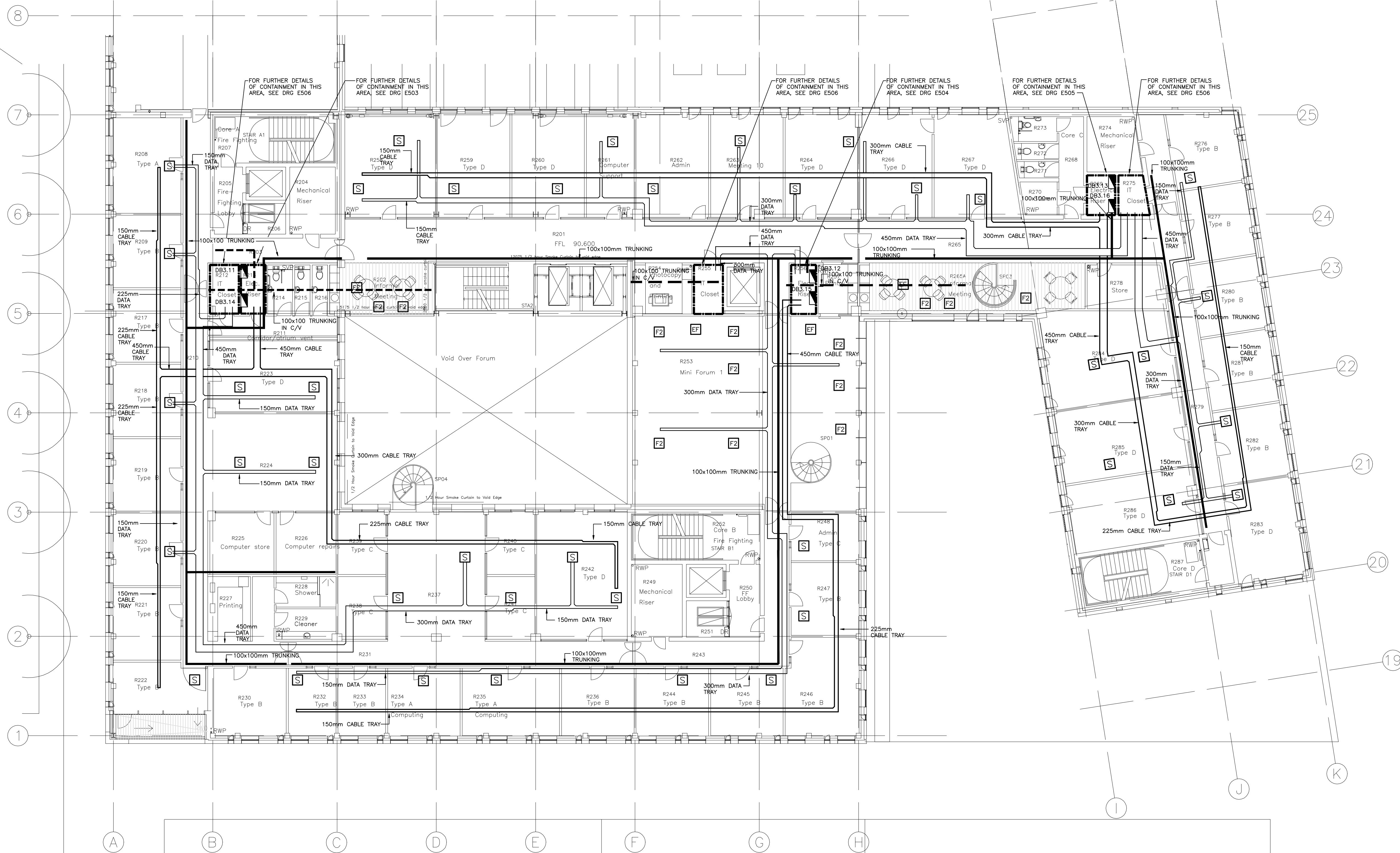
Drawn by **REM**
Checked by **APF**

Date **November 2004**

Job No. **008209**

Drawing No. **E 431**

Rev **A**



FFL 90.600

ARCHITECT	BENNETTS ASSOC. / RELACH AND HALL
DRAWING NO.	0312-A(E)-102 E
TITLE	POTTERROW DEVELOPMENT
	SECOND FLOOR PLAN PHASE 01
DATE RECEIVED	01/03/05
0	2500 5000 7500 10000 12500 SCALE 1:125