

- Notes**
- DO NOT SCALE FROM THIS DRAWING, IF IN DOUBT, REQUEST FURTHER INFORMATION.
 - THIS DRAWING SHALL BE READ IN CONJUNCTION WITH THE MAIN CONTRACT CONDITIONS, THE BUILDING SERVICES SPECIFICATIONS AND SCHEDULES, THE ARCHITECT'S AND STRUCTURAL ENGINEER'S DRAWINGS.
 - REFER TO THE ARCHITECT'S DRAWINGS FOR DETAILS OF ALL SETTING OUT INFORMATION. NO DIMENSIONS SHALL BE MEASURED FROM THIS DRAWING.
 - REFER TO THE ARCHITECT'S REFLECTED CEILING PLANS FOR THE SETTING OUT OF ALL SOFFIT MOUNTED SERVICES COMPONENTS.
 - REFER TO THE ARCHITECT'S DRAWINGS FOR DETAILS OF ALL BUILDING COMPARTMENTATION. ALL SERVICES SHALL BE FIRE SEALED USING THE APPROVED PENETRATION DETAIL, FULLY IN ACCORDANCE WITH THE COMPARTMENT RATING.
 - ALL OUTLETS IN CONCRETE WALLS AND COLUMNS TO HAVE CONDUIT AND BACK-BOXES CAST IN AS ARCHITECT'S AND STRUCTURAL ENGINEER'S DETAILS.
 - FLOORBOX LOCATIONS AND NUMBERS IN OFFICE AREAS ARE INDICATIVE ONLY AND SHALL DEPEND ON FINAL ROOM LAYOUTS.
 - WHERE REQUIRED, CONDUIT & BACK-BOXES SHOULD BE CAST INTO SLAB AS DETAIL xxxx.

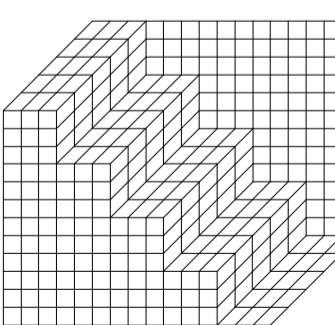
- LEGEND**
- SINGLE 13A SWITCHED SOCKET
 - TWIN 13A SWITCHED SOCKET
 - '?' No. OF SOCKET OUTLETS
 - IP65 RATED SINGLE BS4343 SOCKET OUTLET
 - UNSWITCHED FCU
 - SWITCHED FCU
 - DOUBLE POLE SWITCH. MODULE ENGRAVED FRIDGE / COOKER, ETC AS APPROPRIATE
 - DISTRIBUTION BOARD
 - THREE PHASE OUTLET
 - BUSBAR TRUNKING SYSTEM
 - END FEED FOR BUSBAR
 - 3 COMPARTMENT DADO TRUNKING
 - ISOLATOR
 - DATA AND POWER HUB C/W FLOORBOX LIO IN FLOOR TILE ABOVE
 - HEAVY DUTY STEEL FLOORBOX WITH STONE INSERT TO MATCH FLOOR
 - 4 COMPARTMENT FLOORBOX FOR SUSPENDED FLOOR. INSERT TO MATCH ARCHITECTURAL FINISH.
 - 4 COMPARTMENT FLOORBOX FOR SUSPENDED FLOOR AND C/W UNIBULICAL HOSE TO CARRY 2No. POWER CABLES AND 12No. DATA CABLES. INSERT TO MATCH ARCHITECTURAL FINISH.
 - CIRCULAR POWER GROMMET WITH 1No. 13A SOCKET
 - TELEPHONE POINT
 - DATA POINT
 - TELEVISION POINT
 - WLAN ACCESS POINT MOUNTED AT H/L
 - MICROPHONE POINT

A	ISSUED FOR TENDER	MAR 05	REM	APF
0	ISSUED FOR BILLING	JAN 05	REM	APF
Rev	Description	Date	Dm	Chd

TENDER

Status of drawing

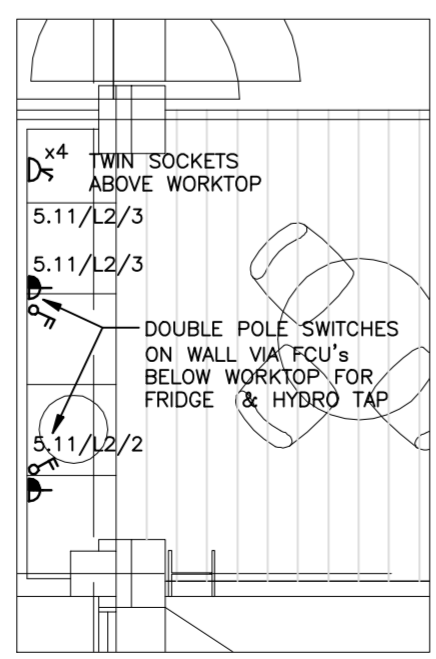
Four Winds
Pacific Quay
Glasgow G51 1DY
Tel: +44 (0)141 419 3000
Fax: +44 (0)870 787 4146
Email: 008209@burohappold.com
Web: www.burohappold.com



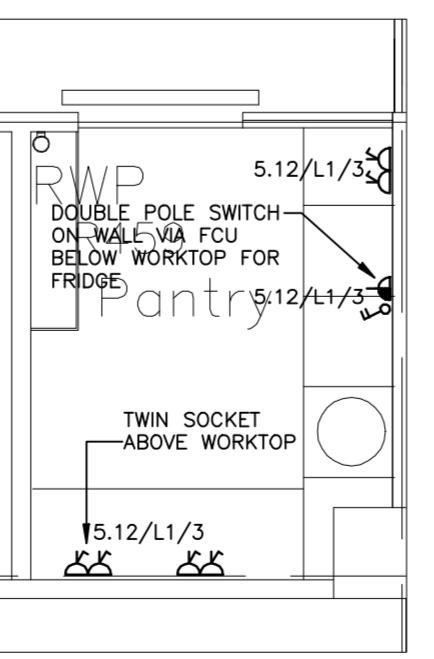
Buro Happold
Consulting Engineers

Architect: **Bennetts Associates / Relach and Hall**
Project: **The University of Edinburgh - Potterrow**
Fourth Floor - Phase 1
Small Power, Data & Comms
General Arrangement

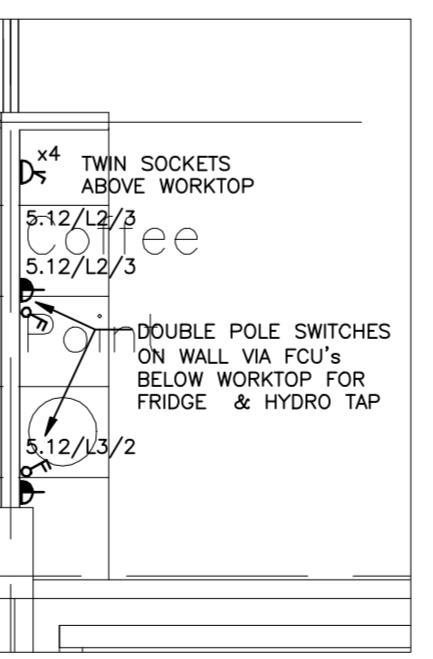
Scale: A1 1:125	Job No. 008209
Drawn by REM	Drawing No. E 151
Checked by APF	
Date November 2004	Rev A



DETAIL 'D'
SCALE 1:50



DETAIL 'B'
SCALE 1:50



DETAIL 'C'
SCALE 1:50

ARCHITECT: BENNETTS ASSOC. / REIACH AND HALL
DRAWING NO. 0312-A(E)-104 E
TITLE: POTTERROW DEVELOPMENT
FOURTH FLOOR PLAN PHASE 01
DATE RECEIVED: 01/03/05

0 2500 5000 7500 10000 12500 SCALE 1:125

N