

- © Buro Happold Limited or its group companies.
All Rights Reserved. Buro Happold and its group companies accept (unless otherwise agreed in writing) their rights under
s.77 to 80 of the Copyright, Design and Patents Act 1988.
- DO NOT SCALE THIS DRAWING.
- Notes
- DO NOT SCALE FROM THIS DRAWING, IF IN DOUBT, REQUEST FURTHER INFORMATION.
 - THIS DRAWING SHALL BE READ IN CONJUNCTION WITH THE MAIN CONTRACT CONDITIONS, THE BUILDING SERVICES SPECIFICATIONS AND SCHEDULES, THE ARCHITECT'S AND STRUCTURAL ENGINEER'S DRAWINGS.
 - REFER TO THE ARCHITECT'S DRAWINGS FOR DETAILS OF ALL SETTING OUT INFORMATION. NO DIMENSIONS SHALL BE MEASURED FROM THIS DRAWING.
 - REFER TO THE ARCHITECT'S REFLECTED CEILING PLANS FOR THE SETTING OUT OF ALL SOFFIT MOUNTED SERVICES COMPONENTS.
 - REFER TO THE ARCHITECT'S DRAWINGS FOR DETAILS OF ALL BUILDING COMPARTMENTATION. ALL SERVICES SHALL BE FIRE SEALED USING THE APPROVED PENETRATION DETAIL, FULLY IN ACCORDANCE WITH THE COMPARTMENT RATING.
 - ALL OUTLETS IN CONCRETE WALLS AND COLUMNS TO HAVE CONDUIT AND BACK-BOXES CAST IN AS ARCHITECT'S AND STRUCTURAL ENGINEER'S DETAILS.
 - FLOORBOX LOCATIONS AND NUMBERS IN OFFICE AREAS ARE INDICATIVE ONLY AND SHALL DEPEND ON FINAL ROOM LAYOUTS.
 - WHERE REQUIRED, CONDUIT & BACK-BOXES SHOULD BE CAST INTO SLAB AS DETAIL xxxx.

LEGEND

- SINGLE 13A SWITCHED SOCKET
- TWIN 13A SWITCHED SOCKET
- '?' No. OF SOCKET OUTLETS
- IP65 RATED SINGLE BS4343 SOCKET OUTLET
- UNSWITCHED FCU
- SWITCHED FCU
- DOUBLE POLE SWITCH, MODULE ENGRAVED FRIDGE / COOKER, ETC AS APPROPRIATE
- DISTRIBUTION BOARD
- THREE PHASE OUTLET
- BUSBAR TRUNKING SYSTEM
- END FEED FOR BUSBAR
- 3 COMPARTMENT DADO TRUNKING
- ISOLATOR
- DATA AND POWER HUB C/W FLOORBOX LIO IN FLOOR TILE ABOVE
- HEAVY DUTY STEEL FLOORBOX WITH STONE INSERT TO MATCH FLOOR
- 4 COMPARTMENT FLOORBOX FOR SUSPENDED FLOOR, INSERT TO MATCH ARCHITECTURAL FINISH.
- 4 COMPARTMENT FLOORBOX FOR SUSPENDED FLOOR AND C/W UNIBULICAL HOSE TO CARRY 2No. POWER CABLES AND 12No. DATA CABLES. INSERT TO MATCH ARCHITECTURAL FINISH.
- CIRCULAR POWER GROMMET WITH 1No. 13A SOCKET
- TELEPHONE POINT
- DATA POINT
- TELEVISION POINT
- WLAN ACCESS POINT MOUNTED AT H/L
- MICROPHONE POINT

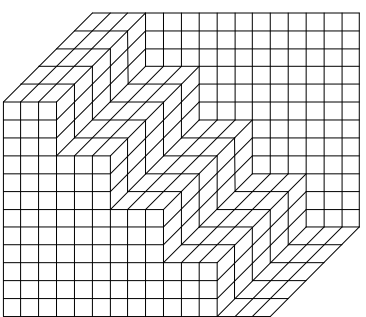
A	ISSUED FOR TENDER	MAR 05	REM	APF
0	ISSUED FOR BILLING	JAN 05	REM	APF
Rev	Description	Date	Dm	Ch'd

TENDER

Status of drawing

Four Winds
Pacific Quay
Glasgow G51 1DY

Tel: +44 (0)141 419 3000
Fax: +44 (0)870 787 4146
Email: 008209@burohappold.com
Web: www.burohappold.com



Buro Happold
Consulting Engineers

Architect Bennetts Associates / Reiach and Hall

Project The University of Edinburgh - Potterrow
Basement - Phase 1
Small Power, Data & Comms
General Arrangement

Scale: A1 1:125

Drawn by REM
Checked by APF

Date November 2004

Job No. 008209

Drawing No. E 101

Rev A

DO NOT SCALE THIS DRAWING.

Notes

- DO NOT SCALE FROM THIS DRAWING, IF IN DOUBT, REQUEST FURTHER INFORMATION.
- THIS DRAWING SHALL BE READ IN CONJUNCTION WITH THE MAIN CONTRACT CONDITIONS, THE BUILDING SERVICES SPECIFICATIONS AND SCHEDULES, THE ARCHITECT'S AND STRUCTURAL ENGINEER'S DRAWINGS.
- REFER TO THE ARCHITECT'S DRAWINGS FOR DETAILS OF ALL SETTING OUT INFORMATION. NO DIMENSIONS SHALL BE MEASURED FROM THIS DRAWING.
- REFER TO THE ARCHITECT'S REFLECTED CEILING PLANS FOR THE SETTING OUT OF ALL SOFFIT MOUNTED SERVICES COMPONENTS.
- REFER TO THE ARCHITECT'S DRAWINGS FOR DETAILS OF ALL BUILDING COMPARTMENTATION. ALL SERVICES SHALL BE FIRE SEALED USING THE APPROVED PENETRATION DETAIL, FULLY IN ACCORDANCE WITH THE COMPARTMENT RATING.
- ALL OUTLETS IN CONCRETE WALLS AND COLUMNS TO HAVE CONDUIT AND BACK-BOXES CAST IN AS ARCHITECT'S AND STRUCTURAL ENGINEER'S DETAILS.
- FLOORBOX LOCATIONS AND NUMBERS IN OFFICE AREAS ARE INDICATIVE ONLY AND SHALL DEPEND ON FINAL ROOM LAYOUTS.
- WHERE REQUIRED, CONDUIT & BACK-BOXES SHOULD BE CAST INTO SLAB AS DETAIL xxxx.

LEGEND

- SINGLE 13A SWITCHED SOCKET
- TWIN 13A SWITCHED SOCKET
- '7' No. OF SOCKET OUTLETS
- IP65 RATED SINGLE BS4343 SOCKET OUTLET
- UNSWITCHED FCU
- SWITCHED FCU
- DOUBLE POLE SWITCH. MODULE
- ENGRAVED FRIDGE / COOKER, ETC AS APPROPRIATE
- DISTRIBUTION BOARD
- THREE PHASE OUTLET
- BUSBAR TRUNKING SYSTEM
- END FEED FOR BUSBAR
- 3 COMPARTMENT DADO TRUNKING
- ISOLATOR
- DATA AND POWER HUB C/W FLOORBOX LIO IN FLOOR TILE ABOVE
- HEAVY DUTY STEEL FLOORBOX WITH STONE INSERT TO MATCH ARCHITECTURAL FINISH.
- 4 COMPARTMENT FLOORBOX FOR SUSPENDED FLOOR AND C/W UNBILICAL HOSE TO CARRY 2No. POWER CABLES AND 12No. DATA CABLES. INSERT TO MATCH ARCHITECTURAL FINISH.
- CIRCULAR POWER GROMMET WITH 1No. 13A SOCKET
- TELEPHONE POINT
- DATA POINT
- TELEVISION POINT
- WLAN ACCESS POINT MOUNTED AT H/L
- MICROPHONE POINT

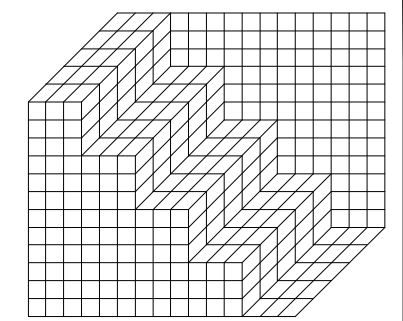
A	ISSUED FOR TENDER	MAR 05	REM	APF
0	ISSUED FOR BILLING	JAN 05	REM	APF
Rev	Description	Date	Dm	Chd

TENDER

Status of drawing

Four Winds
Pacific Quay
Glasgow G51 1DY

Tel: +44 (0)141 419 3000
Fax: +44 (0)870 787 4146
Email: 008209@burohappold.com
Web: www.burohappold.com



Buro Happold
Consulting Engineers

Architect: Bennetts Associates / Relach and Hall

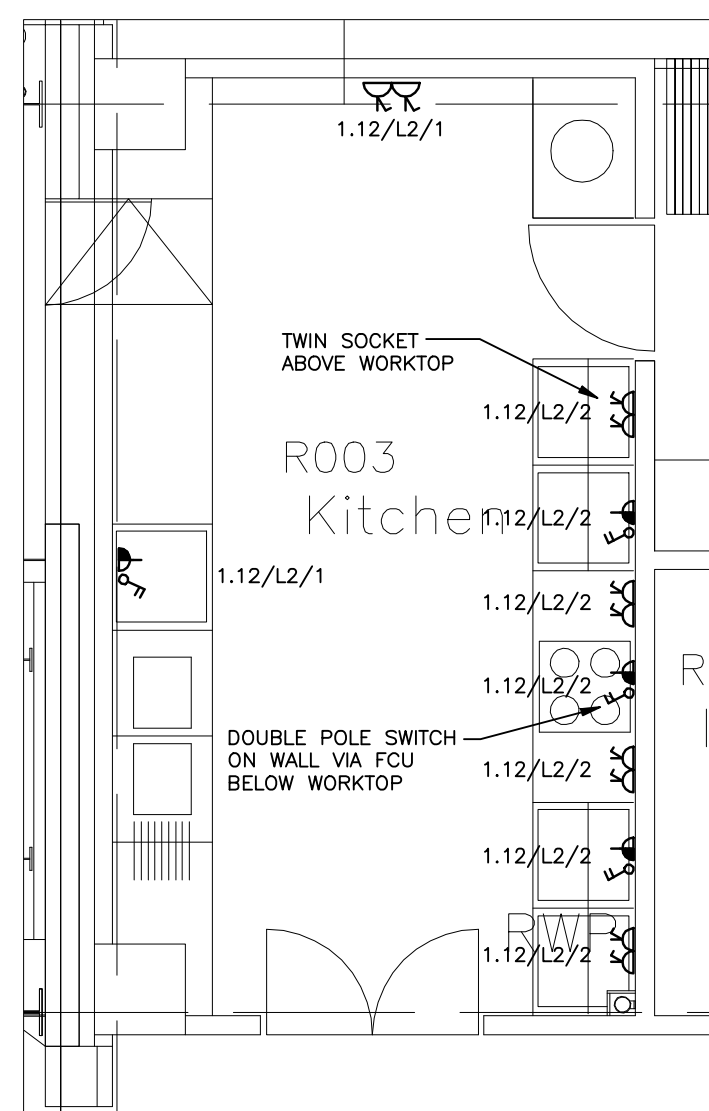
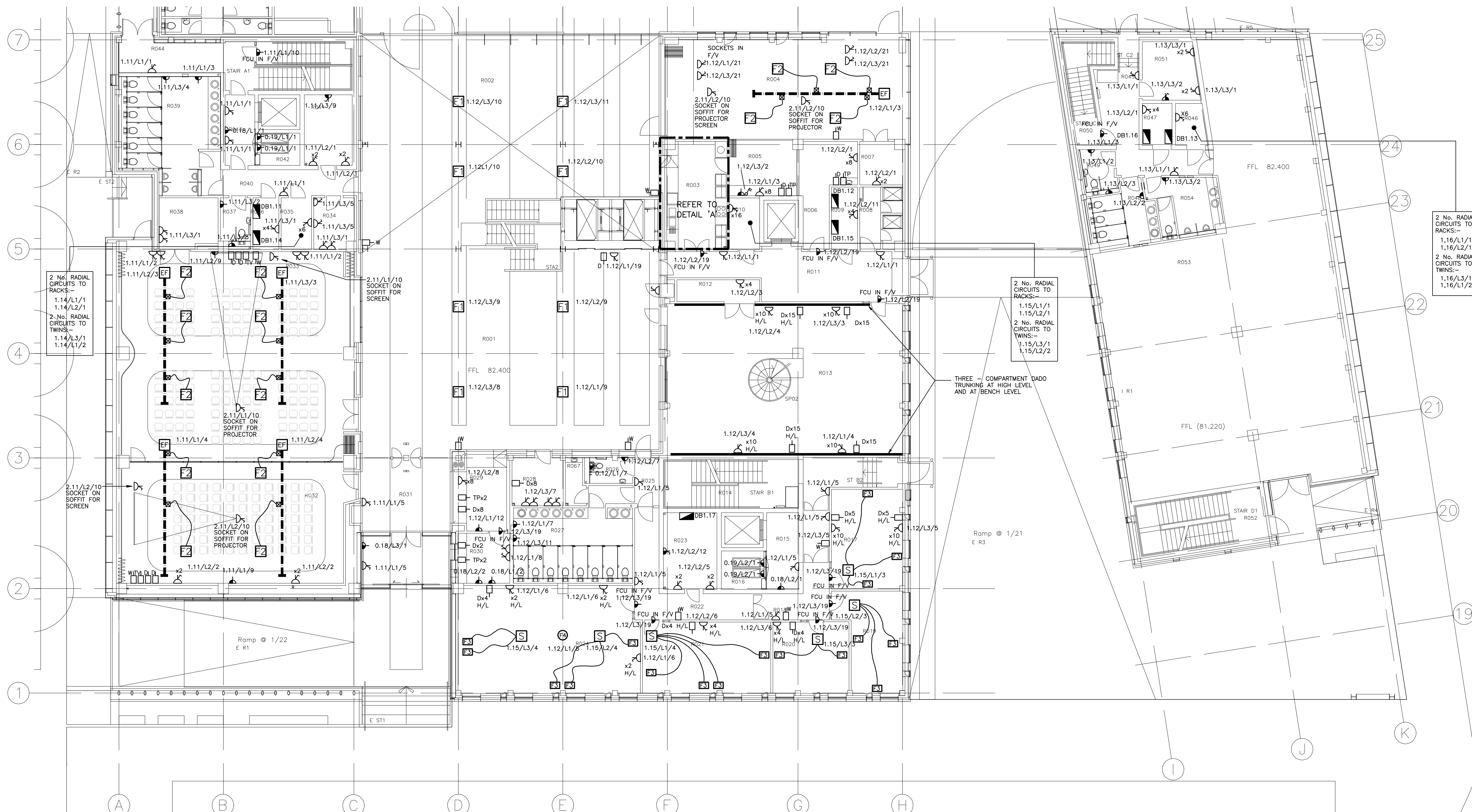
Project: **The University of Edinburgh - Potterrow**
Ground Floor - Phase 1
Small Power, Data & Comms
General Arrangement

Scale: A1 1:125
Drawn by: REM
Checked by: APF

Date: November 2004

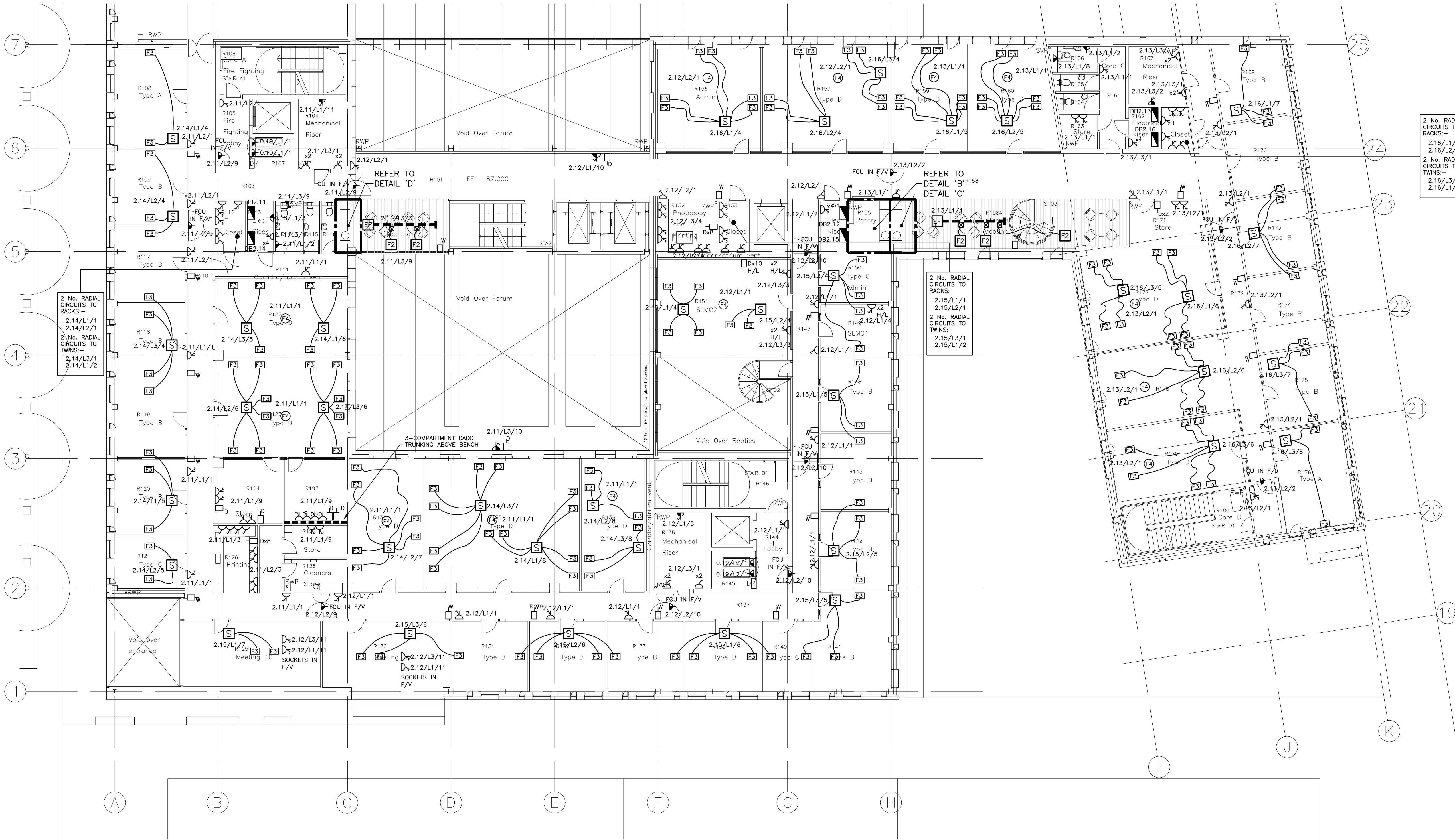
Job No: **008209**
Drawing No: **E 111**

Rev: A



DETAIL 'A'
SCALE 1:50

ARCHITECT	BENNETTS ASSOC. / REIACH AND HALL
DRAWING NO.	0312-A(E)-100 E
TITLE	POTTERROW DEVELOPMENT
	GROUND FLOOR PLAN PHASE 01
DATE RECEIVED	01/03/05
0	2500 5000 7500 10000 12500 SCALE 1:125



- Notes**
- DO NOT SCALE FROM THIS DRAWING, IF IN DOUBT, REQUEST FURTHER INFORMATION.
 - THIS DRAWING SHALL BE READ IN CONJUNCTION WITH THE MAIN CONTRACT CONDITIONS, THE BUILDING SERVICES SPECIFICATIONS AND SCHEDULES, THE ARCHITECT'S AND STRUCTURAL ENGINEER'S DRAWINGS.
 - REFER TO THE ARCHITECT'S DRAWINGS FOR DETAILS OF ALL SETTING OUT INFORMATION, NO DIMENSIONS SHALL BE MEASURED FROM THIS DRAWING.
 - REFER TO THE ARCHITECT'S REFLECTED CEILING PLANS FOR THE SETTING OUT OF ALL SOFFIT MOUNTED SERVICES COMPONENTS.
 - REFER TO THE ARCHITECT'S DRAWINGS FOR DETAILS OF ALL BUILDING COMPARTMENTATION, ALL SERVICES SHALL BE FIRE SEALED USING THE APPROVED PENETRATION DETAIL, FULLY IN ACCORDANCE WITH THE COMPARTMENT RATING.
 - ALL OUTLETS IN CONCRETE WALLS AND COLUMNS TO HAVE CONDUIT AND BACK-BOXES CAST IN AS ARCHITECT'S AND STRUCTURAL ENGINEER'S DETAILS.
 - FLOORBOX LOCATIONS AND NUMBERS IN OFFICE AREAS ARE INDICATIVE ONLY AND SHALL DEPEND ON FINAL ROOM LAYOUTS.
 - WHERE REQUIRED, CONDUIT & BACK-BOXES SHOULD BE CAST INTO SLAB AS DETAIL xxxx.

- LEGEND**
- SINGLE 13A SWITCHED SOCKET
 - TWIN 13A SWITCHED SOCKET
 - '?' No. OF SOCKET OUTLETS
 - IP65 RATED SINGLE BS4343 SOCKET OUTLET
 - UNSWITCHED FCU
 - SWITCHED FCU
 - DOUBLE POLE SWITCH, MODULE ENGRAVED FRIDGE / COOKER, ETC AS APPROPRIATE
 - DISTRIBUTION BOARD
 - THREE PHASE OUTLET
 - BUSBAR TRUNKING SYSTEM
 - END FEED FOR BUSBAR
 - 3 COMPARTMENT DADO TRUNKING
 - ISOLATOR
 - DATA AND POWER HUB C/W FLOORBOX LIO IN FLOOR TILE ABOVE
 - HEAVY DUTY STEEL FLOORBOX WITH STONE INSERT TO MATCH FLOOR
 - 4 COMPARTMENT FLOORBOX FOR SUSPENDED FLOOR, INSERT TO MATCH ARCHITECTURAL FINISH.
 - 4 COMPARTMENT FLOORBOX FOR SUSPENDED FLOOR AND C/W UNIBULICAL ROSE TO CARRY 2No. POWER CABLES AND 12No. DATA CABLES. INSERT TO MATCH ARCHITECTURAL FINISH.
 - CIRCULAR POWER GROMMET WITH 1No. 13A SOCKET
 - TELEPHONE POINT
 - DATA POINT
 - TELEVISION POINT
 - WLAN ACCESS POINT MOUNTED AT H/L
 - MICROPHONE POINT

A	ISSUED FOR TENDER	MAR 05	REM	APF
0	ISSUED FOR BILLING	JAN 05	REM	APF
Rev	Description	Date	Dm	Chd

TENDER

Status of drawing

Four Winds
Pacific Quay
Glasgow G51 1DY

Tel: +44 (0)141 419 9000
Fax: +44 (0)870 787 4146
Email: 008209@burohappold.com
Web: www.burohappold.com

Buro Happold
Consulting Engineers

Architect: **Bennetts Associates / Relach and Hall**

Project: **The University of Edinburgh - Potterrow**

First Floor - Phase 1
Small Power, Data & Comms
General Arrangement

Scales: A1 1:125
Drawn by: REM
Checked by: APF

Job No: **008209**
Drawing No: **E 121**
Date: November 2004
Rev: A

ARCHITECT: BENNETTS ASSOC. / REIACH AND HALL

DRAWING NO. 0312-A(E)-101 E

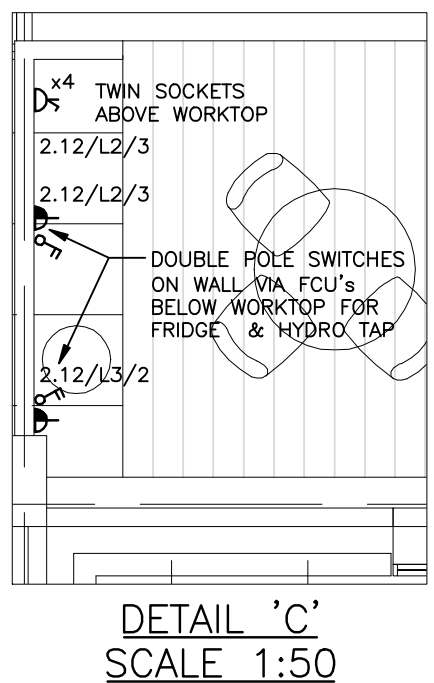
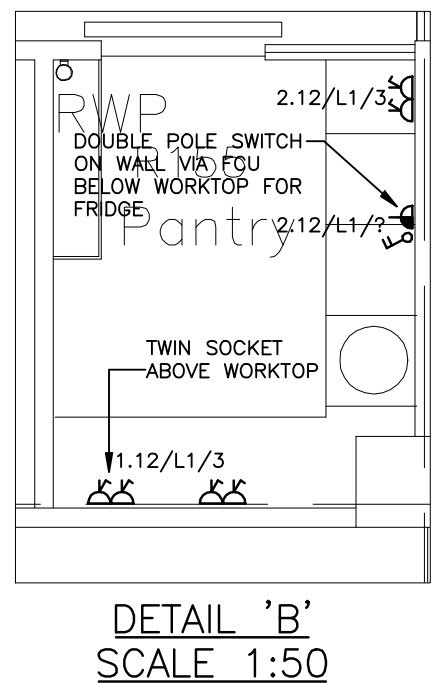
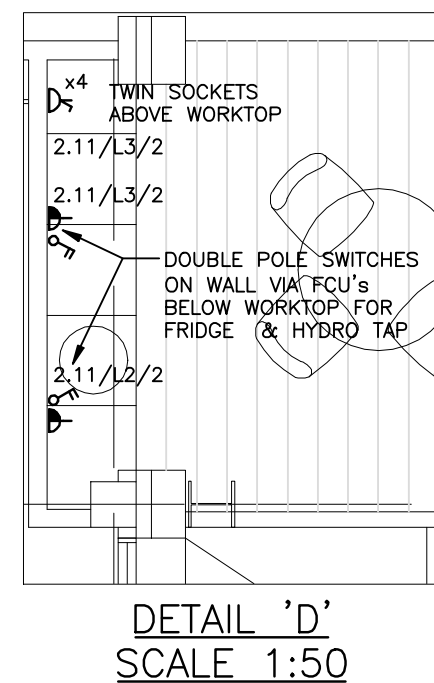
TITLE: POTTERROW DEVELOPMENT

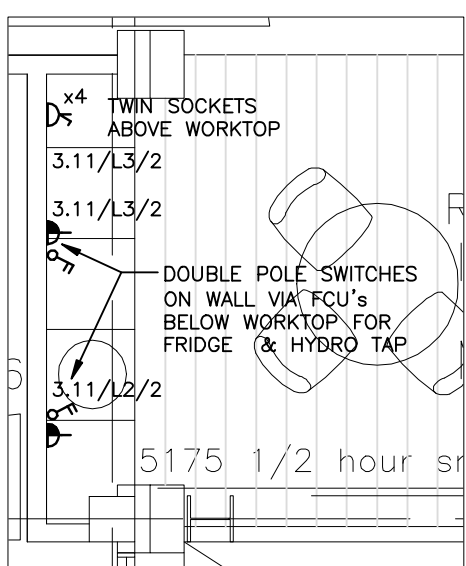
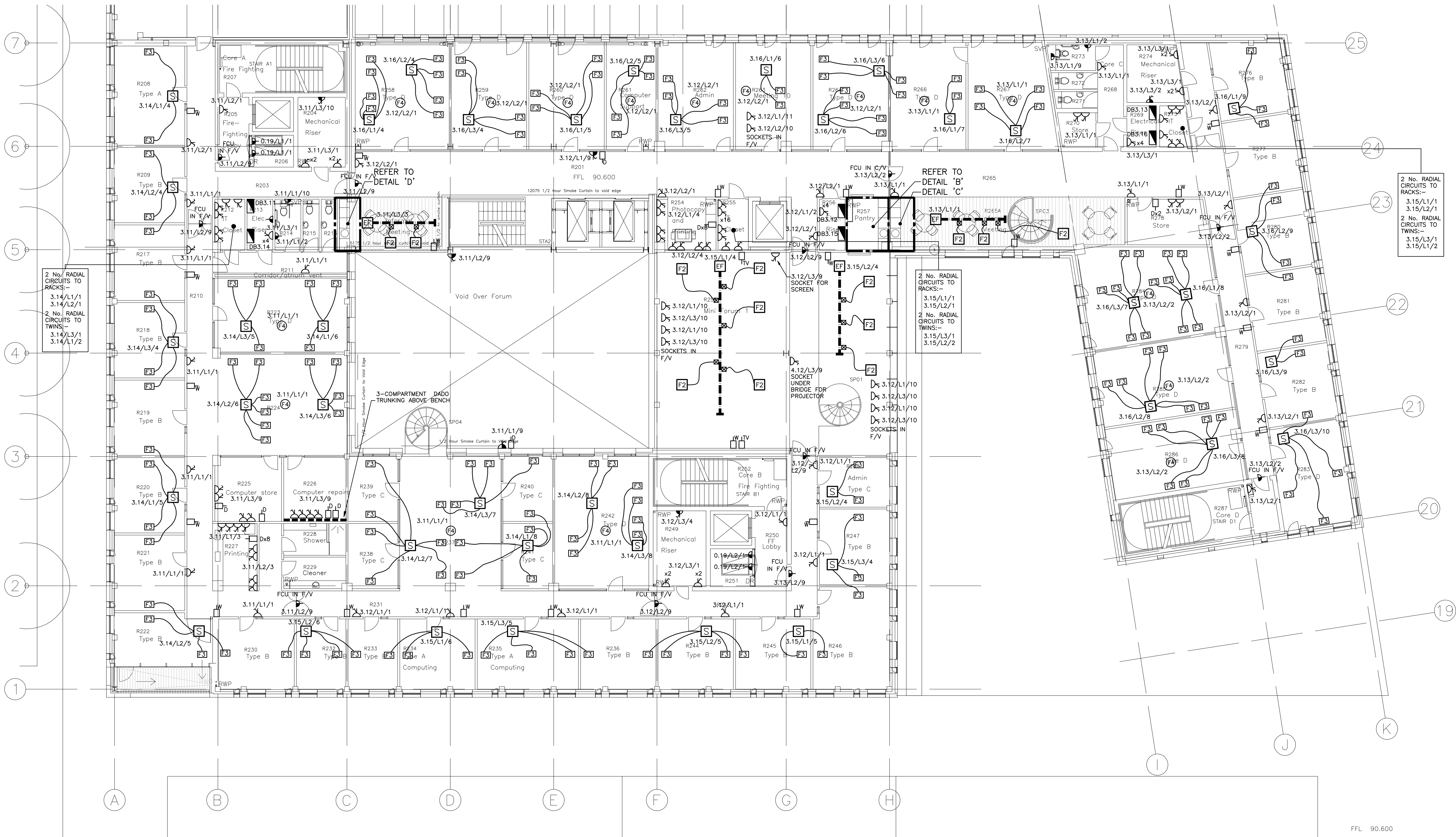
FIRST FLOOR PLAN PHASE 01

DATE RECEIVED: 01/03/05

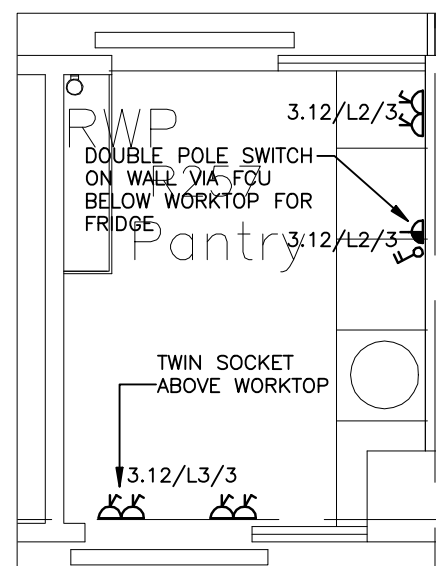
0 2500 5000 7500 10000 12500 SCALE 1:125

N

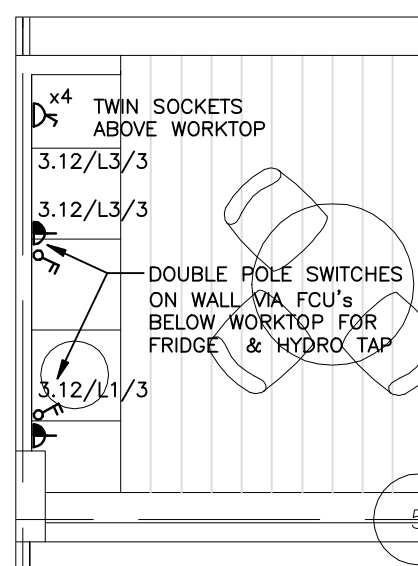




DETAIL 'D'
SCALE 1:50



DETAIL 'B'
SCALE 1:50



DETAIL 'C'
SCALE 1:50

© Buro Happold Limited or its group companies.
All Rights reserved. Buro Happold and its group companies accept no liability for any errors or omissions in this drawing.

DO NOT SCALE THIS DRAWING.

Notes

- DO NOT SCALE FROM THIS DRAWING, IF IN DOUBT, REQUEST FURTHER INFORMATION.
- THIS DRAWING SHALL BE READ IN CONJUNCTION WITH THE MAIN CONTRACT CONDITIONS, THE BUILDING SERVICES SPECIFICATIONS AND SCHEDULES, THE ARCHITECT'S AND STRUCTURAL ENGINEER'S DRAWINGS.
- REFER TO THE ARCHITECT'S DRAWINGS FOR DETAILS OF ALL SETTING OUT INFORMATION, NO DIMENSIONS SHALL BE MEASURED FROM THIS DRAWING.
- REFER TO THE ARCHITECT'S REFLECTED CEILING PLANS FOR THE SETTING OUT OF ALL SOFFIT MOUNTED SERVICES COMPONENTS.
- REFER TO THE ARCHITECT'S DRAWINGS FOR DETAILS OF ALL BUILDING COMPARTMENTATION, ALL SERVICES SHALL BE FIRE SEALED USING THE APPROVED PENETRATION DETAIL, FULLY IN ACCORDANCE WITH THE COMPARTMENT RATING.
- ALL OUTLETS IN CONCRETE WALLS AND COLUMNS TO HAVE CONDUIT AND BACK-BOXES CAST IN AS ARCHITECT'S AND STRUCTURAL ENGINEER'S DETAILS.
- FLOORBOX LOCATIONS AND NUMBERS IN OFFICE AREAS ARE INDICATIVE ONLY AND SHALL DEPEND ON FINAL ROOM LAYOUTS.
- WHERE REQUIRED, CONDUIT & BACK-BOXES SHOULD BE CAST INTO SLAB AS DETAIL xxxx.

LEGEND

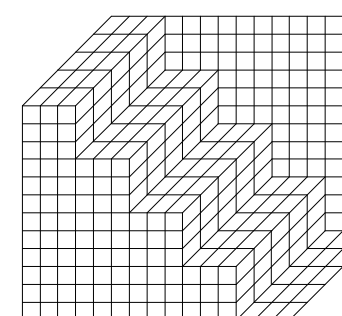
- SINGLE 13A SWITCHED SOCKET
- TWIN 13A SWITCHED SOCKET
- '?' No. OF SOCKET OUTLETS
- IP65 RATED SINGLE BS4343 SOCKET OUTLET
- UNSWITCHED FCU
- SWITCHED FCU
- DOUBLE POLE SWITCH, MODULE ENGRAVED FRIDGE / COOKER, ETC AS APPROPRIATE
- DISTRIBUTION BOARD
- THREE PHASE OUTLET
- BUSBAR TRUNKING SYSTEM
- END FEED FOR BUSBAR
- 3 COMPARTMENT DADO TRUNKING
- ISOLATOR
- DATA AND POWER HUB C/W FLOORBOX LIO IN FLOOR TILE ABOVE
- HEAVY DUTY STEEL FLOORBOX WITH STONE INSERT TO MATCH FLOOR
- 4 COMPARTMENT FLOORBOX FOR SUSPENDED FLOOR, INSERT TO MATCH ARCHITECTURAL FINISH.
- 4 COMPARTMENT FLOORBOX FOR SUSPENDED FLOOR AND C/W UNIBLOCK HOSE TO CARRY 2No. POWER CABLES AND 12No. DATA CABLES. INSERT TO MATCH ARCHITECTURAL FINISH.
- CIRCULAR POWER GROMMET WITH 1No. 13A SOCKET
- TELEPHONE POINT
- DATA POINT
- TELEVISION POINT
- WLAN ACCESS POINT MOUNTED AT H/L
- MICROPHONE POINT

A	ISSUED FOR TENDER	MAR 05	REM	APF
0	ISSUED FOR BILLING	JAN 05	REM	APF
Rev	Description	Date	Dm	Chd

TENDER

Status of drawing

Four Winds
Pacific Quay
Glasgow G51 1DY
Tel: +44 (0)141 419 3000
Fax: +44 (0)870 787 4146
Email: 008209@burohappold.com
Web: www.burohappold.com

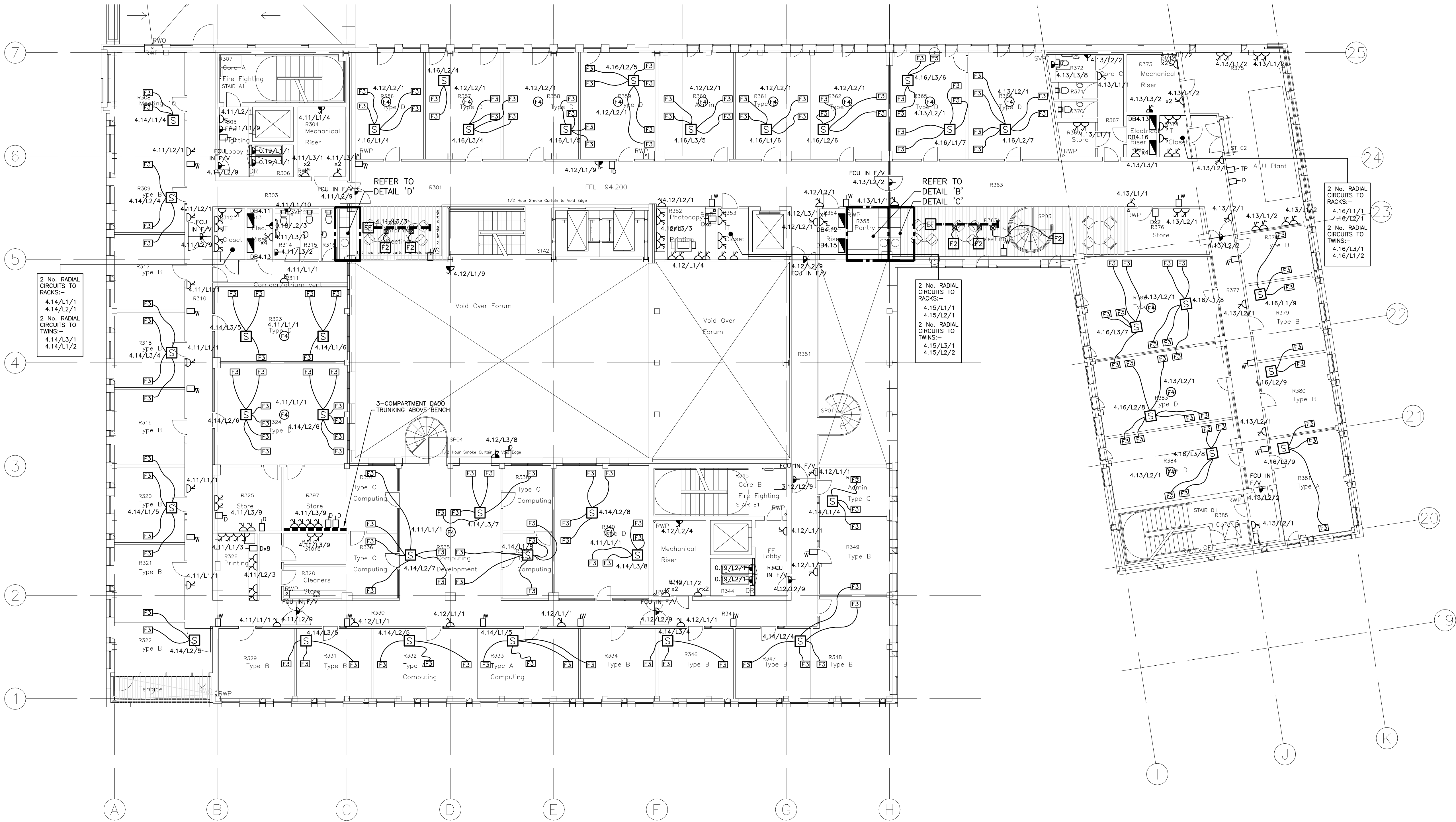


Buro Happold
Consulting Engineers

Architect: **Bennetts Associates / Relach and Hall**
Project: **The University of Edinburgh - Potterrow**
Second Floor - Phase 1
Small Power, Data & Comms
General Arrangement

Scale: A1 1:125	Job No. 008209
Drawn by REM	Drawing No. E 131
Checked by APF	
Date November 2004	Rev A

ARCHITECT	BENNETTS ASSOC. / REIACH AND HALL
DRAWING NO.	0312-A(E)-102 E
TITLE	POTTERROW DEVELOPMENT
	SECOND FLOOR PLAN PHASE 01
DATE RECEIVED	01/03/05
0 2500 5000 7500 10000 12500	SCALE 1:125



© Buro Happold Limited or its group companies.
All Rights Reserved. Buro Happold and its group companies warrant herein otherwise agreed in writing their rights under
s.77 to 80 of the Copyright, Design and Patents Act 1988.

DO NOT SCALE THIS DRAWING.

Notes

- DO NOT SCALE FROM THIS DRAWING, IF IN DOUBT, REQUEST FURTHER INFORMATION.
- THIS DRAWING SHALL BE READ IN CONJUNCTION WITH THE MAIN CONTRACT CONDITIONS, THE BUILDING SERVICES SPECIFICATIONS AND SCHEDULES, THE ARCHITECT'S AND STRUCTURAL ENGINEER'S DRAWINGS.
- REFER TO THE ARCHITECT'S DRAWINGS FOR DETAILS OF ALL SETTING OUT INFORMATION, NO DIMENSIONS SHALL BE MEASURED FROM THIS DRAWING.
- REFER TO THE ARCHITECT'S REFLECTED CEILING PLANS FOR THE SETTING OUT OF ALL SOFFIT MOUNTED SERVICES COMPONENTS.
- REFER TO THE ARCHITECT'S DRAWINGS FOR DETAILS OF ALL BUILDING COMPARTMENTATION, ALL SERVICES SHALL BE FIRE SEALED USING THE APPROVED PENETRATION DETAIL, FULLY IN ACCORDANCE WITH THE COMPARTMENT RATING.
- ALL OUTLETS IN CONCRETE WALLS AND COLUMNS TO HAVE CONDUIT AND BACK-BOXES CAST IN AS ARCHITECT'S AND STRUCTURAL ENGINEER'S DETAILS.
- FLOORBOX LOCATIONS AND NUMBERS IN OFFICE AREAS ARE INDICATIVE ONLY AND SHALL DEPEND ON FINAL ROOM LAYOUTS.
- WHERE REQUIRED, CONDUIT & BACK-BOXES SHOULD BE CAST INTO SLAB AS DETAIL xxxx.

LEGEND

- SINGLE 13A SWITCHED SOCKET
- TWIN 13A SWITCHED SOCKET
- '13' No. of SOCKET OUTLETS
- IP65 RATED SINGLE BS4343 SOCKET OUTLET
- UNSWITCHED FCU
- SWITCHED FCU
- DOUBLE POLE SWITCH. MODULE ENGRAVED FRIDGE / COOKER, ETC AS APPROPRIATE
- DISTRIBUTION BOARD
- THREE PHASE OUTLET
- BUSBAR TRUNKING SYSTEM
- END FEED FOR BUSBAR
- 3 COMPARTMENT DADO TRUNKING
- ISOLATOR
- DATA AND POWER HUB C/W FLOORBOX LIO IN FLOOR TILE ABOVE
- HEAVY DUTY STEEL FLOORBOX WITH STONE INSERT TO MATCH FLOOR
- 4 COMPARTMENT FLOORBOX FOR SUSPENDED FLOOR AND C/W UMBILICAL HOSE TO CARRY 2 No. POWER CABLES AND 12 No. DATA CABLES. INSERT TO MATCH ARCHITECTURAL FINISH.
- CIRCULAR POWER GROMMET WITH 1 No. 13A SOCKET
- TELEPHONE POINT
- DATA POINT
- TELEVISION POINT
- WLAN ACCESS POINT MOUNTED AT H/L
- MICROPHONE POINT

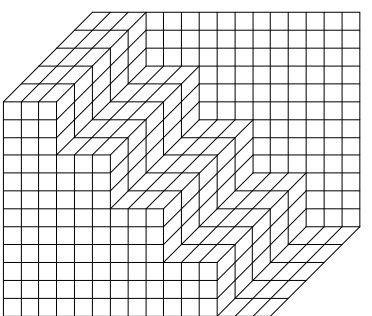
A	ISSUED FOR TENDER	MAR 05	REM	APF
0	ISSUED FOR BILLING	JAN 05	REM	APF
Rev	Description	Date	Dm	Chd

TENDER

Status of drawing

Four Winds
Pacific Quay
Glasgow G51 1DY

Tel: +44 (0)141 419 3000
Fax: +44 (0)870 787 4146
Email: 008209@burohappold.com
Web: www.burohappold.com



Buro Happold
Consulting Engineers

Architect: Bennetts Associates / Relach and Hall

Project: The University of Edinburgh - Potterrow

Third Floor - Phase 1
Small Power, Data & Comms
General Arrangement

Scale: A1 1:125

Drawn by: REM

Checked by: APF

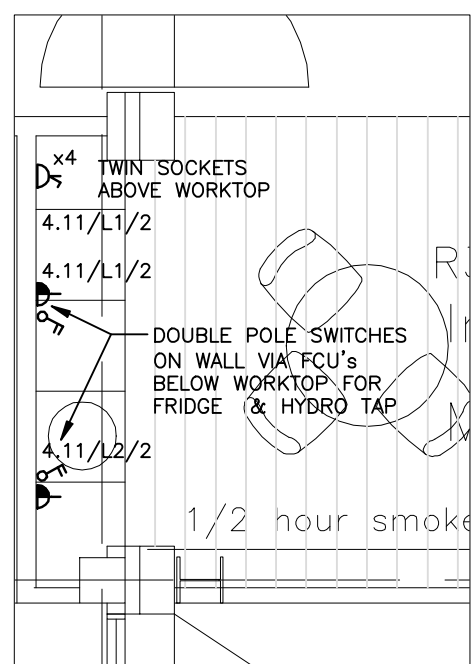
Date: November 2004

Job No: 008209

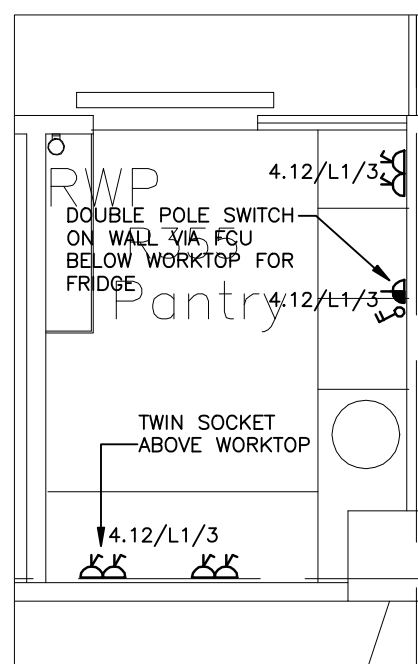
Drawing No: E 141

Rev: A

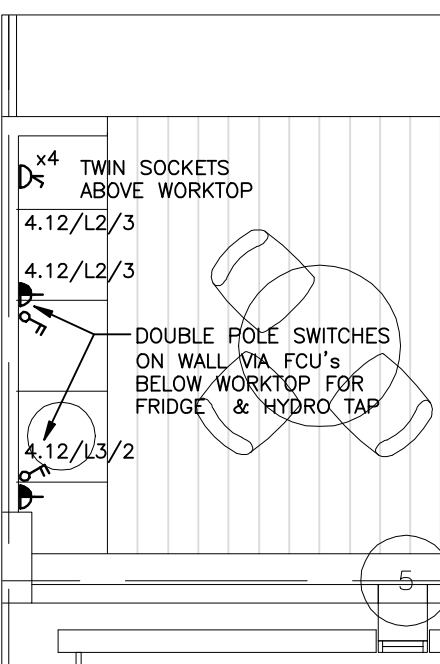
ARCHITECT	BENNETTS ASSOC. / REIACH AND HALL
DRAWING NO.	0312-A(E)-103 E
TITLE	POTTERROW DEVELOPMENT
	THIRD FLOOR PLAN PHASE 01
DATE RECEIVED	01/03/05
0	2500 5000 7500 10000 12500 SCALE 1:125



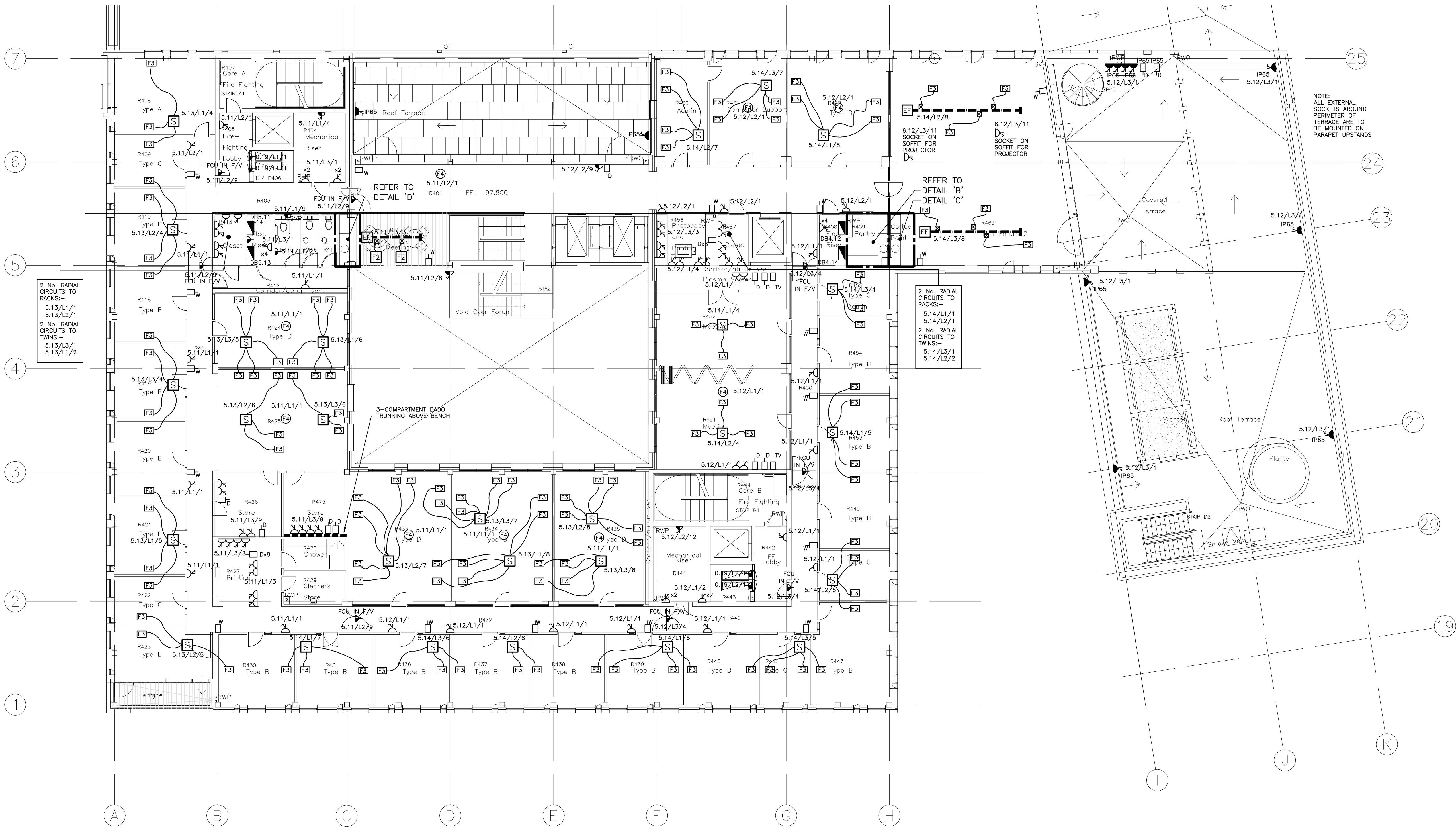
DETAIL 'D'
SCALE 1:50



DETAIL 'B'
SCALE 1:50



DETAIL 'C'
SCALE 1:50



- Notes**
- DO NOT SCALE FROM THIS DRAWING, IF IN DOUBT, REQUEST FURTHER INFORMATION.
 - THIS DRAWING SHALL BE READ IN CONJUNCTION WITH THE MAIN CONTRACT CONDITIONS, THE BUILDING SERVICES SPECIFICATIONS AND SCHEDULES, THE ARCHITECT'S AND STRUCTURAL ENGINEER'S DRAWINGS.
 - REFER TO THE ARCHITECT'S DRAWINGS FOR DETAILS OF ALL SETTING OUT INFORMATION. NO DIMENSIONS SHALL BE MEASURED FROM THIS DRAWING.
 - REFER TO THE ARCHITECT'S REFLECTED CEILING PLANS FOR THE SETTING OUT OF ALL SOFFIT MOUNTED SERVICES COMPONENTS.
 - REFER TO THE ARCHITECT'S DRAWINGS FOR DETAILS OF ALL BUILDING COMPARTMENTATION. ALL SERVICES SHALL BE FIRE SEALED USING THE APPROVED PENETRATION DETAIL, FULLY IN ACCORDANCE WITH THE COMPARTMENT RATING.
 - ALL OUTLETS IN CONCRETE WALLS AND COLUMNS TO HAVE CONDUIT AND BACK-BOXES CAST IN AS ARCHITECT'S AND STRUCTURAL ENGINEER'S DETAILS.
 - FLOORBOX LOCATIONS AND NUMBERS IN OFFICE AREAS ARE INDICATIVE ONLY AND SHALL DEPEND ON FINAL ROOM LAYOUTS.
 - WHERE REQUIRED, CONDUIT & BACK-BOXES SHOULD BE CAST INTO SLAB AS DETAIL xxxx.

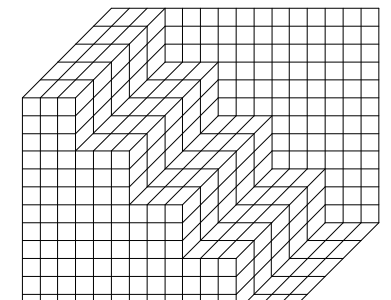
- LEGEND**
- SINGLE 13A SWITCHED SOCKET
 - TWIN 13A SWITCHED SOCKET
 - '?' No. of SOCKET OUTLETS
 - IP65 RATED SINGLE BS4343 SOCKET OUTLET
 - UNSWITCHED FCU
 - SWITCHED FCU
 - DOUBLE POLE SWITCH. MODULE ENGRAVED FRIDGE / COOKER, ETC AS APPROPRIATE
 - DISTRIBUTION BOARD
 - THREE PHASE OUTLET
 - BUSBAR TRUNKING SYSTEM
 - END FEED FOR BUSBAR
 - 3 COMPARTMENT DADO TRUNKING
 - ISOLATOR
 - DATA AND POWER HUB C/W FLOORBOX LIO IN FLOOR TILE ABOVE
 - HEAVY DUTY STEEL FLOORBOX WITH STONE INSERT TO MATCH FLOOR
 - 4 COMPARTMENT FLOORBOX FOR SUSPENDED FLOOR. INSERT TO MATCH ARCHITECTURAL FINISH.
 - 4 COMPARTMENT FLOORBOX FOR SUSPENDED FLOOR AND C/W UNIBULICAL HOSE TO CARRY 2No. POWER CABLES AND 12No. DATA CABLES. INSERT TO MATCH ARCHITECTURAL FINISH.
 - CIRCULAR POWER GROMMET WITH 1No. 13A SOCKET
 - TELEPHONE POINT
 - DATA POINT
 - TELEVISION POINT
 - WLAN ACCESS POINT MOUNTED AT H/L
 - MICROPHONE POINT

A	ISSUED FOR TENDER	MAR 05	REM	APF
0	ISSUED FOR BILLING	JAN 05	REM	APF
Rev	Description	Date	Dm	Chd

TENDER

Status of drawing

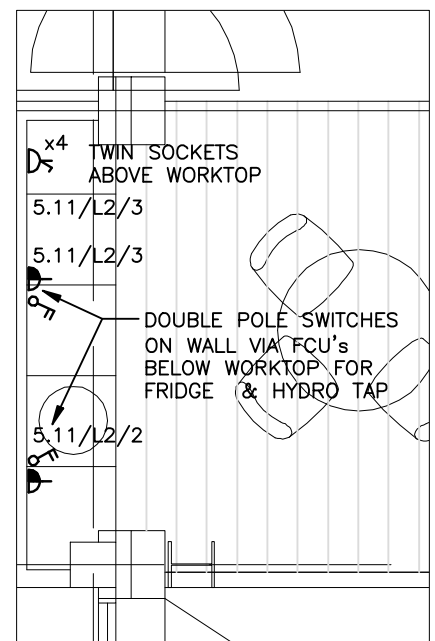
Four Winds
Pacific Quay
Glasgow G51 1DY
Tel: +44 (0)141 419 3000
Fax: +44 (0)870 787 4146
Email: 008209@burohappold.com
Web: www.burohappold.com



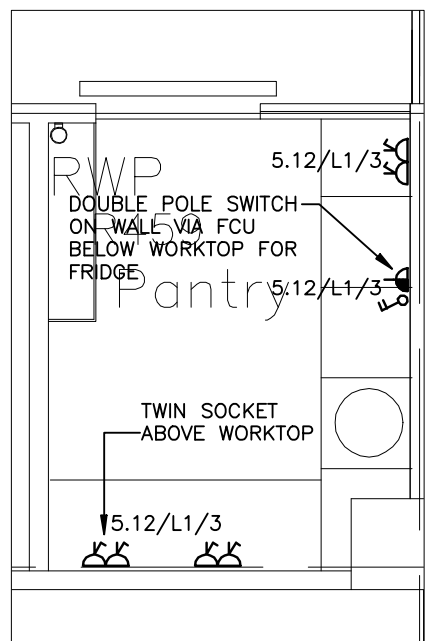
Buro Happold
Consulting Engineers

Architect: **Bennetts Associates / Relach and Hall**
Project: **The University of Edinburgh - Potterrow**
Fourth Floor - Phase 1
Small Power, Data & Comms
General Arrangement

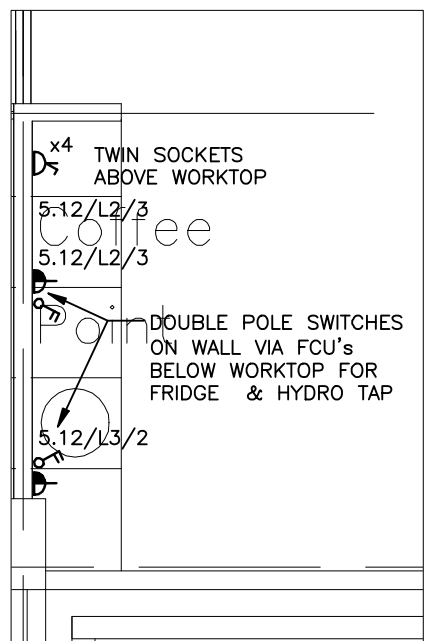
Scale: A1 1:125	Job No. 008209
Drawn by REM	Drawing No. E 151
Checked by APF	
Date November 2004	Rev A



DETAIL 'D'
SCALE 1:50



DETAIL 'B'
SCALE 1:50

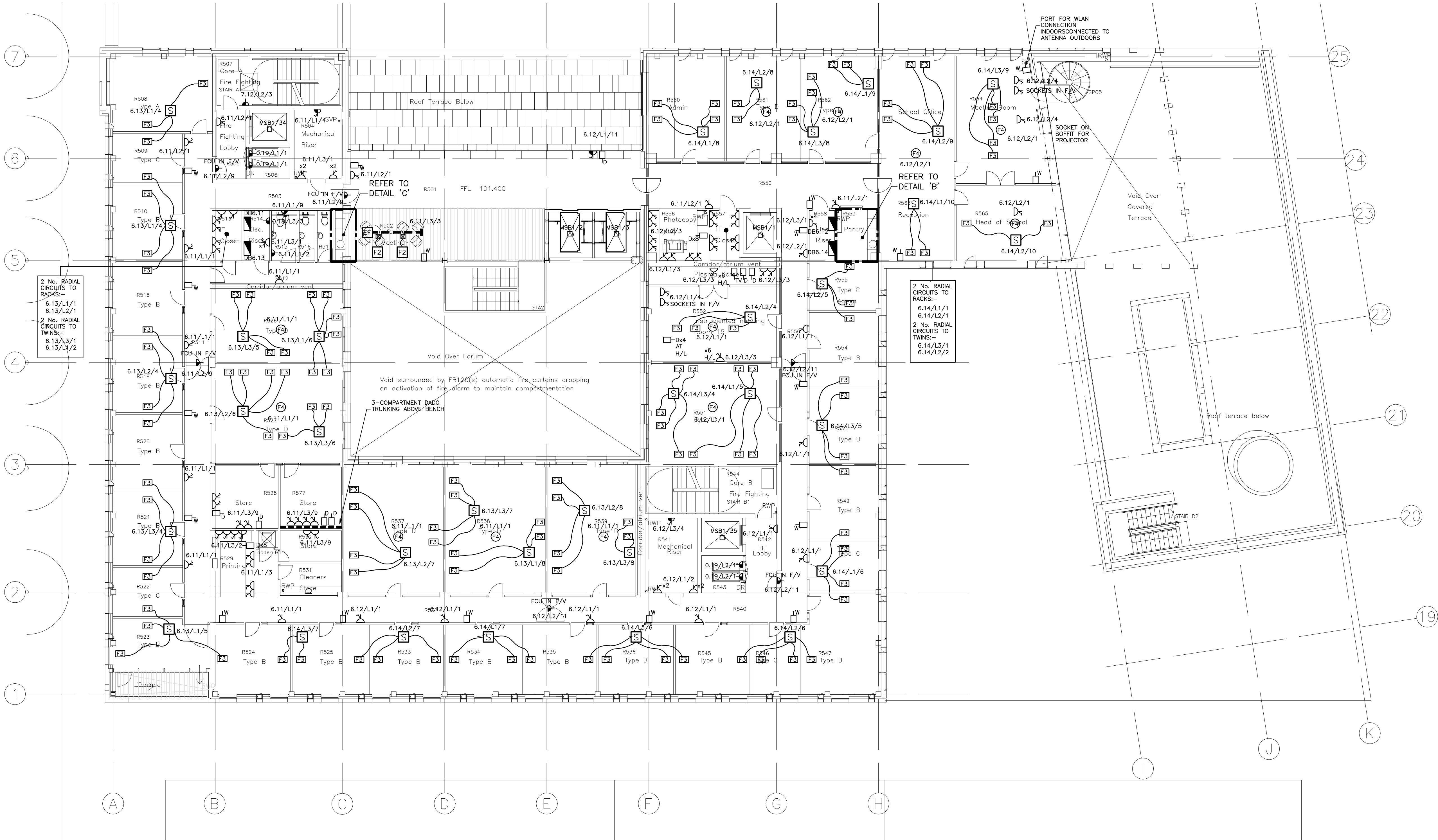


DETAIL 'C'
SCALE 1:50

ARCHITECT: BENNETTS ASSOC. / REIACH AND HALL
DRAWING NO. 0312-A(E)-104 E
TITLE: POTTERROW DEVELOPMENT
FOURTH FLOOR PLAN PHASE 01
DATE RECEIVED: 01/03/05

0 2500 5000 7500 10000 12500 SCALE 1:125

N



- © Buro Happold Limited or its group companies.
All Rights reserved. Buro Happold and its group companies warrant (unless otherwise agreed in writing) their rights under s.17 to 18 of the Copyright, Design and Patents Act 1988.
- DO NOT SCALE THIS DRAWING.
- Notes
1. DO NOT SCALE FROM THIS DRAWING, IF IN DOUBT, REQUEST FURTHER INFORMATION.
 2. THIS DRAWING SHALL BE READ IN CONJUNCTION WITH THE MAIN CONTRACT CONDITIONS, THE BUILDING SERVICES SPECIFICATIONS AND SCHEDULES, THE ARCHITECT'S AND STRUCTURAL ENGINEER'S DRAWINGS.
 3. REFER TO THE ARCHITECT'S DRAWINGS FOR DETAILS OF ALL SETTING OUT INFORMATION. NO DIMENSIONS SHALL BE MEASURED FROM THIS DRAWING.
 4. REFER TO THE ARCHITECT'S REFLECTED CEILING PLANS FOR THE SETTING OUT OF ALL SOFFIT MOUNTED SERVICES COMPONENTS.
 5. REFER TO THE ARCHITECT'S DRAWINGS FOR DETAILS OF ALL BUILDING COMPARTMENTATION. ALL SERVICES SHALL BE FIRE SEALED USING THE APPROVED PENETRATION DETAIL, FULLY IN ACCORDANCE WITH THE COMPARTMENT RATING.
 6. ALL OUTLETS IN CONCRETE WALLS AND COLUMNS TO HAVE CONDUIT AND BACK-BOXES CAST IN AS ARCHITECT'S AND STRUCTURAL ENGINEER'S DETAILS.
 7. FLOORBOX LOCATIONS AND NUMBERS IN OFFICE AREAS ARE INDICATIVE ONLY AND SHALL DEPEND ON FINAL ROOM LAYOUTS.
 8. WHERE REQUIRED, CONDUIT & BACK-BOXES SHOULD BE CAST INTO SLAB AS DETAIL xxxx.

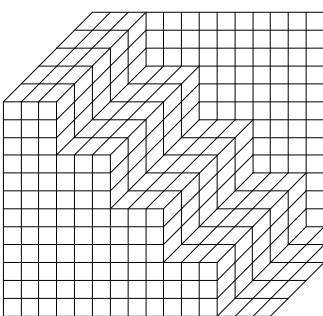
- LEGEND
- SINGLE 13A SWITCHED SOCKET
 - TWIN 13A SWITCHED SOCKET
 - '?' No. OF SOCKET OUTLETS
 - IP65 RATED SINGLE BS4343 SOCKET OUTLET
 - UNSWITCHED FCU
 - SWITCHED FCU
 - DOUBLE POLE SWITCH. MODULE ENGRAVED FRIDGE / COOKER, ETC AS APPROPRIATE
 - DISTRIBUTION BOARD
 - THREE PHASE OUTLET
 - BUSBAR TRUNKING SYSTEM
 - END FEED FOR BUSBAR
 - 3 COMPARTMENT DADO TRUNKING
 - ISOLATOR
 - DATA AND POWER HUB C/W FLOORBOX LIO IN FLOOR TILE ABOVE
 - HEAVY DUTY STEEL FLOORBOX WITH STONE INSERT TO MATCH FLOOR
 - 4 COMPARTMENT FLOORBOX FOR SUSPENDED FLOOR. INSERT TO MATCH ARCHITECTURAL FINISH.
 - 4 COMPARTMENT FLOORBOX FOR SUSPENDED FLOOR AND C/W UNIBICAL HOSE TO CARRY 2No. POWER CABLES AND 12No. DATA CABLES. INSERT TO MATCH ARCHITECTURAL FINISH.
 - CIRCULAR POWER GROMMET WITH 1No. 13A SOCKET
 - TELEPHONE POINT
 - DATA POINT
 - TELEVISION POINT
 - WLAN ACCESS POINT MOUNTED AT H/L
 - MICROPHONE POINT

A	ISSUED FOR TENDER	MAR 05	REM	APF
0	ISSUED FOR BILLING	JAN 05	REM	APF
Rev	Description	Date	Dm	Chd

TENDER

Status of drawing

Four Winds
Pacific Quay
Glasgow G51 1DY
Tel: +44 (0)141 419 3000
Fax: +44 (0)870 787 4146
Email: 008209@burohappold.com
Web: www.burohappold.com



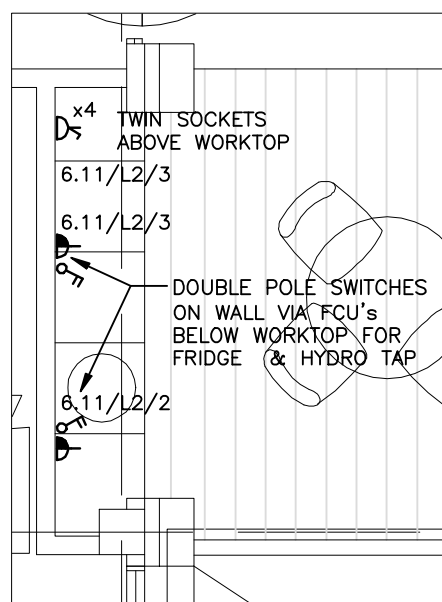
Buro Happold
Consulting Engineers

Architect: Bennetts Associates / Relach and Hall
Project: The University of Edinburgh - Potterrow
Fifth Floor - Phase 1
Small Power, Data & Comms
General Arrangement

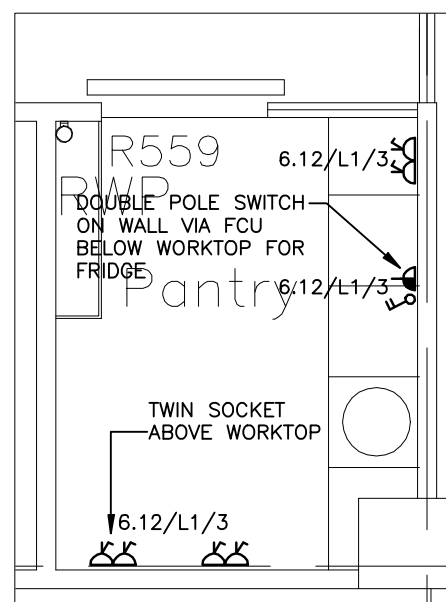
Scale: A1 1:125
Drawn by: REM
Checked by: APF
Date: November 2004

Job No: 008209
Drawing No: E 161
Rev: A

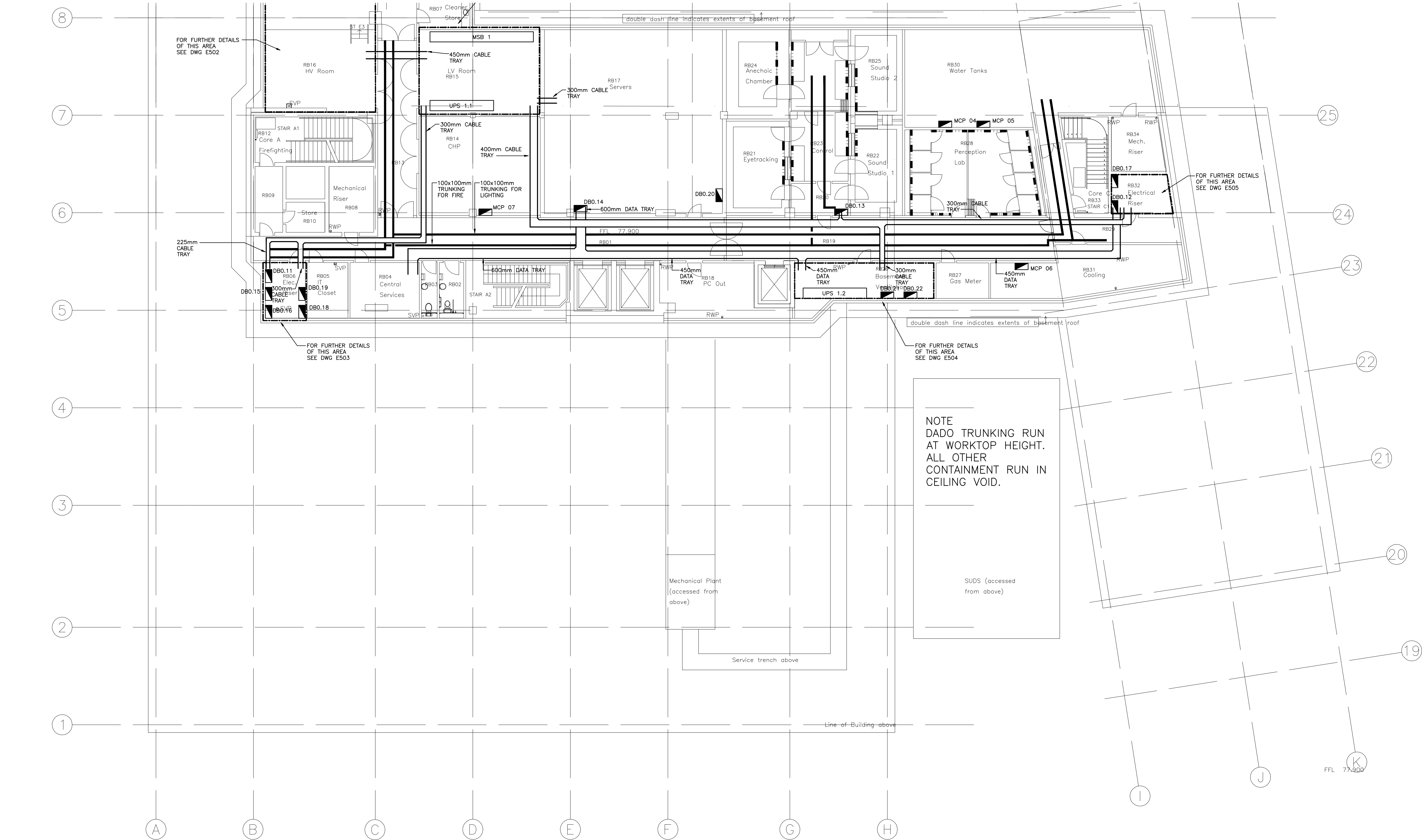
ARCHITECT	BENNETTS ASSOC. / REIACH AND HALL
DRAWING NO.	0312-A(E)-105 E
TITLE	POTTERROW DEVELOPMENT
	FIFTH FLOOR PLAN PHASE 01
DATE RECEIVED	01/03/05
0	2500 5000 7500 10000 12500 SCALE 1:125



DETAIL 'C'
SCALE 1:50



DETAIL 'B'
SCALE 1:50



- © Buro Happold Limited or its group companies.
All Rights Reserved. Buro Happold and its group companies accept (unless otherwise agreed in writing) their rights under
s.17 to 18 of the Copyright, Design and Patents Act 1988.
- DO NOT SCALE THIS DRAWING.
- Notes
- DO NOT SCALE FROM THIS DRAWING, IF IN DOUBT, REQUEST FURTHER INFORMATION.
 - THIS DRAWING SHALL BE READ IN CONJUNCTION WITH THE MAIN CONTRACT CONDITIONS, THE BUILDING SERVICES SPECIFICATIONS AND SCHEDULES, THE ARCHITECT'S AND STRUCTURAL ENGINEER'S DRAWINGS.
 - REFER TO THE ARCHITECT'S DRAWINGS FOR DETAILS OF ALL SETTING OUT INFORMATION. NO DIMENSIONS SHALL BE MEASURED FROM THIS DRAWING.
 - REFER TO THE ARCHITECT'S REFLECTED CEILING PLANS FOR THE SETTING OUT OF ALL SOFFIT MOUNTED SERVICES COMPONENTS.
 - REFER TO THE ARCHITECT'S DRAWINGS FOR DETAILS OF ALL BUILDING COMPARTMENTATION. ALL SERVICES SHALL BE FIRE SEALED USING THE APPROVED PENETRATION DETAIL, FULLY IN ACCORDANCE WITH THE COMPARTMENT RATING.
 - ALL OUTLETS IN CONCRETE WALLS AND COLUMNS TO HAVE CONDUIT AND BACK-BOXES CAST IN AS ARCHITECT'S AND STRUCTURAL ENGINEER'S DRAWINGS.
 - FLOORBOX LOCATIONS AND NUMBERS IN OFFICE AREAS ARE INDICATIVE ONLY AND SHALL DEPEND ON FINAL ROOM LAYOUTS.
 - ALL CONTAINMENT IN FLOOR VOID UNLESS OTHERWISE STATED

- LEGEND
- DISTRIBUTION BOARD
 - END FEED FOR BUSBAR
 - DATA AND POWER HUB C/W FLOORBOX LIO IN FLOOR TILE ABOVE
 - HEAVY DUTY STEEL FLOORBOX WITH STONE INSERT TO MATCH FLOOR
 - 3 COMPARTMENT FLOORBOX FOR SUSPENDED FLOOR. INSERT TO MATCH ARCHITECTURAL FINISH.
 - TRAY
 - 2-COMPARTMENT TRUNKING. SIZE AS INDICATED
 - 2-COMPARTMENT TRUNKING IN C/V. SIZE AS INDICATED
 - 3 COMPARTMENT SCREED TRUNKING. SIZE AS INDICATED
 - 3 COMPARTMENT DADO TRUNKING

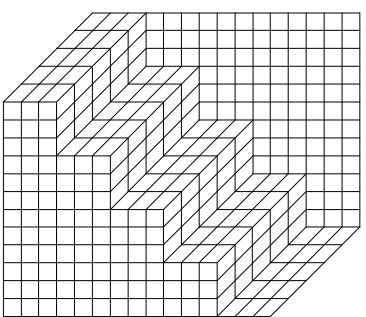
A	ISSUED FOR TENDER	MAR 05	REM	APF
0	ISSUED FOR BILLING	JAN 05	REM	APF
Rev	Description	Date	Dm	Ch'd

TENDER

Status of drawing

Four Winds
Pacific Quay
Glasgow G51 1DY

Tel: +44 (0)141 419 3000
Fax: +44 (0)870 787 4146
Email: 008209@burohappold.com
Web: www.burohappold.com



Buro Happold
Consulting Engineers

Architect Bennetts Associates / Reiach and Hall

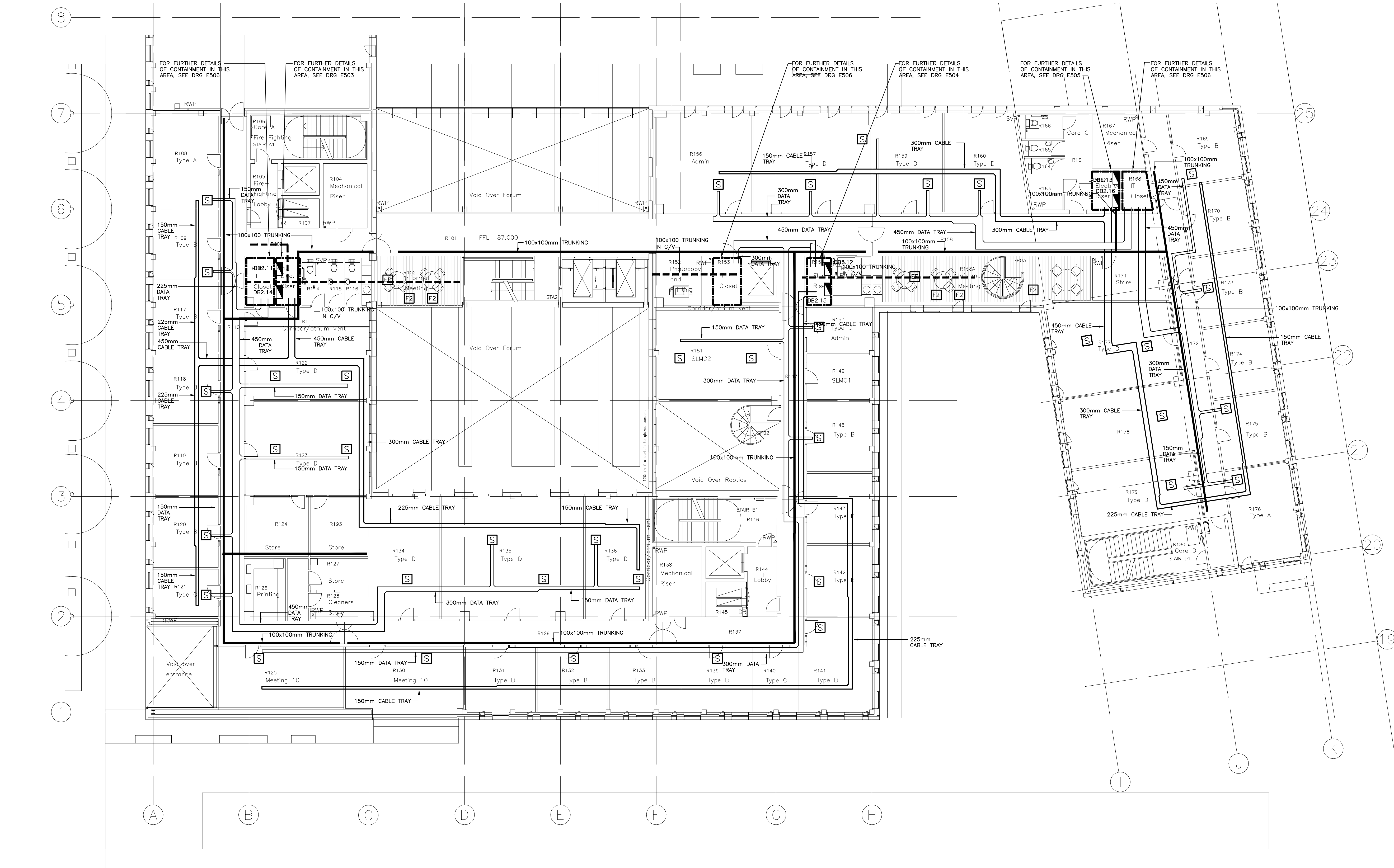
Project The University of Edinburgh - Potterrow
Basement - Phase 1
Containment
General Arrangement

Scale: A1 1:125
Drawn by REM
Checked by APF

Date November 2004

Job No. 008209
Drawing No. E 401

Rev A



DO NOT SCALE THIS DRAWING.

Notes

- DO NOT SCALE FROM THIS DRAWING, IF IN DOUBT, REQUEST FURTHER INFORMATION.
- THIS DRAWING SHALL BE READ IN CONJUNCTION WITH THE MAIN CONTRACT CONDITIONS, THE BUILDING SERVICES SPECIFICATIONS AND SCHEDULES, THE ARCHITECT'S AND STRUCTURAL ENGINEER'S DRAWINGS.
- REFER TO THE ARCHITECT'S DRAWINGS FOR DETAILS OF ALL SETTING OUT INFORMATION. NO DIMENSIONS SHALL BE MEASURED FROM THIS DRAWING.
- REFER TO THE ARCHITECT'S REFLECTED CEILING PLANS FOR THE SETTING OUT OF ALL SOFFIT MOUNTED SERVICES COMPONENTS.
- REFER TO THE ARCHITECT'S DRAWINGS FOR DETAILS OF ALL BUILDING COMPARTMENTATION. ALL SERVICES SHALL BE FIRE SEALED USING THE APPROVED PENETRATION DETAIL, FULLY IN ACCORDANCE WITH THE COMPARTMENT RATING.
- ALL OUTLETS IN CONCRETE WALLS AND COLUMNS TO HAVE CONDUIT AND BACK-BOXES CAST IN AS ARCHITECT'S AND STRUCTURAL ENGINEER'S DRAWINGS.
- FLOORBOX LOCATIONS AND NUMBERS IN OFFICE AREAS ARE INDICATIVE ONLY AND SHALL DEPEND ON FINAL ROOM LAYOUTS.
- ALL CONTAINMENT IN FLOOR VOID UNLESS OTHERWISE STATED

LEGEND

- DISTRIBUTION BOARD
- END FEED FOR BUSBAR
- DATA AND POWER HUB C/W FLOORBOX LIO IN FLOOR TILE ABOVE
- HEAVY DUTY STEEL FLOORBOX WITH STONE INSERT TO MATCH FLOOR
- 3 COMPARTMENT FLOORBOX FOR SUSPENDED FLOOR, INSERT TO MATCH ARCHITECTURAL FINISH.
- TRAY
- 2-COMPARTMENT TRUNKING, SIZE AS INDICATED
- 2-COMPARTMENT TRUNKING IN C/V, SIZE AS INDICATED
- 3 COMPARTMENT SCREENED TRUNKING, SIZE AS INDICATED
- 3 COMPARTMENT DADO TRUNKING

NOTE
OMITTED FOR CLARITY IS
100x50mm 2-COMPARTMENT
TRUNKING IN NON-GLAZED
CORRIDOR PARTITIONS,
CARRYING POWER TO OFFICE
LIGHTING. REFER TO
0312(22)202.

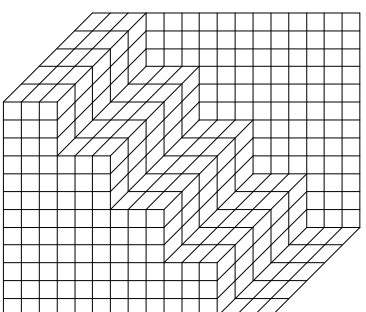
A	ISSUED FOR TENDER	MAR 05	REM	APF
0	ISSUED FOR BILLING	JAN 05	REM	APF
Rev	Description	Date	Dm	Chd

TENDER

Status of drawing

Four Winds
Pacific Quay
Glasgow G51 1DY

Tel: +44 (0)141 419 3000
Fax: +44 (0)870 787 4146
Email: 008209@burohappold.com
Web: www.burohappold.com



Buro Happold
Consulting Engineers

Architect Bennetts Associates / Reiach and Hall

Project **The University of Edinburgh - Potterrow**
First Floor - Phase 1
Containment
General Arrangement

Scale: A1 1:125

Drawn by REM

Checked by APF

Date November 2004

Job No. **008209**

Drawing No. **E 421**

Rev **A**

DO NOT SCALE THIS DRAWING.

Notes

- DO NOT SCALE FROM THIS DRAWING, IF IN DOUBT, REQUEST FURTHER INFORMATION.
- THIS DRAWING SHALL BE READ IN CONJUNCTION WITH THE MAIN CONTRACT CONDITIONS, THE BUILDING SERVICES SPECIFICATIONS AND SCHEDULES, THE ARCHITECT'S AND STRUCTURAL ENGINEER'S DRAWINGS.
- REFER TO THE ARCHITECT'S DRAWINGS FOR DETAILS OF ALL SETTING OUT INFORMATION. NO DIMENSIONS SHALL BE MEASURED FROM THIS DRAWING.
- REFER TO THE ARCHITECT'S REFLECTED CEILING PLANS FOR THE SETTING OUT OF ALL SOFFIT MOUNTED SERVICES COMPONENTS.
- REFER TO THE ARCHITECT'S DRAWINGS FOR DETAILS OF ALL BUILDING COMPARTMENTATION. ALL SERVICES SHALL BE FIRE SEALED USING THE APPROVED PENETRATION DETAIL, FULLY IN ACCORDANCE WITH THE COMPARTMENT RATING.
- ALL OUTLETS IN CONCRETE WALLS AND COLUMNS TO HAVE CONDUIT AND BACK-BOXES CAST IN AS ARCHITECT'S AND STRUCTURAL ENGINEER'S DRAWINGS.
- FLOORBOX LOCATIONS AND NUMBERS IN OFFICE AREAS ARE INDICATIVE ONLY AND SHALL DEPEND ON FINAL ROOM LAYOUTS.
- ALL CONTAINMENT IN FLOOR VOID UNLESS OTHERWISE STATED

LEGEND

- DISTRIBUTION BOARD
- END FEED FOR BUSBAR
- DATA AND POWER HUB C/W FLOORBOX LIO IN FLOOR TILE ABOVE
- HEAVY DUTY STEEL FLOORBOX WITH STONE INSERT TO MATCH FLOOR
- 3 COMPARTMENT FLOORBOX FOR SUSPENDED FLOOR. INSERT TO MATCH ARCHITECTURAL FINISH.
- TRAY
- 2-COMPARTMENT TRUNKING. SIZE AS INDICATED
- 2-COMPARTMENT TRUNKING IN C/V. SIZE AS INDICATED
- 3 COMPARTMENT SCREENED TRUNKING. SIZE AS INDICATED
- 3 COMPARTMENT DADO TRUNKING

NOTE
OMITTED FOR CLARITY IS
100x50mm 2-COMPARTMENT
TRUNKING IN NON-GLAZED
CORRIDOR PARTITIONS,
CARRYING POWER TO OFFICE
LIGHTING. REFER TO
0312(22)202.

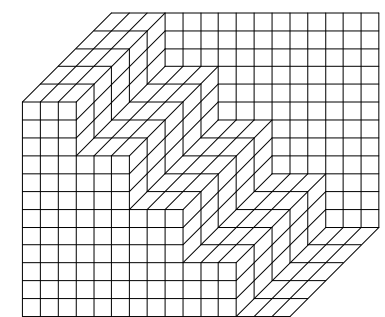
A	ISSUED FOR TENDER	MAR 05	REM	APF
0	ISSUED FOR BILLING	JAN 05	REM	APF
Rev	Description	Date	Dm	Chd

TENDER

Status of drawing

Four Winds
Pacific Quay
Glasgow G51 1DY

Tel: +44 (0)141 419 3000
Fax: +44 (0)870 787 4146
Email: 008209@burohappold.com
Web: www.burohappold.com



Buro Happold
Consulting Engineers

Architect *Bennetts Associates / Relach and Hall*

Project **The University of Edinburgh - Potterrow**
Second Floor - Phase 1
Containment
General Arrangement

Scale: A1 1:125

Drawn by REM
Checked by APF

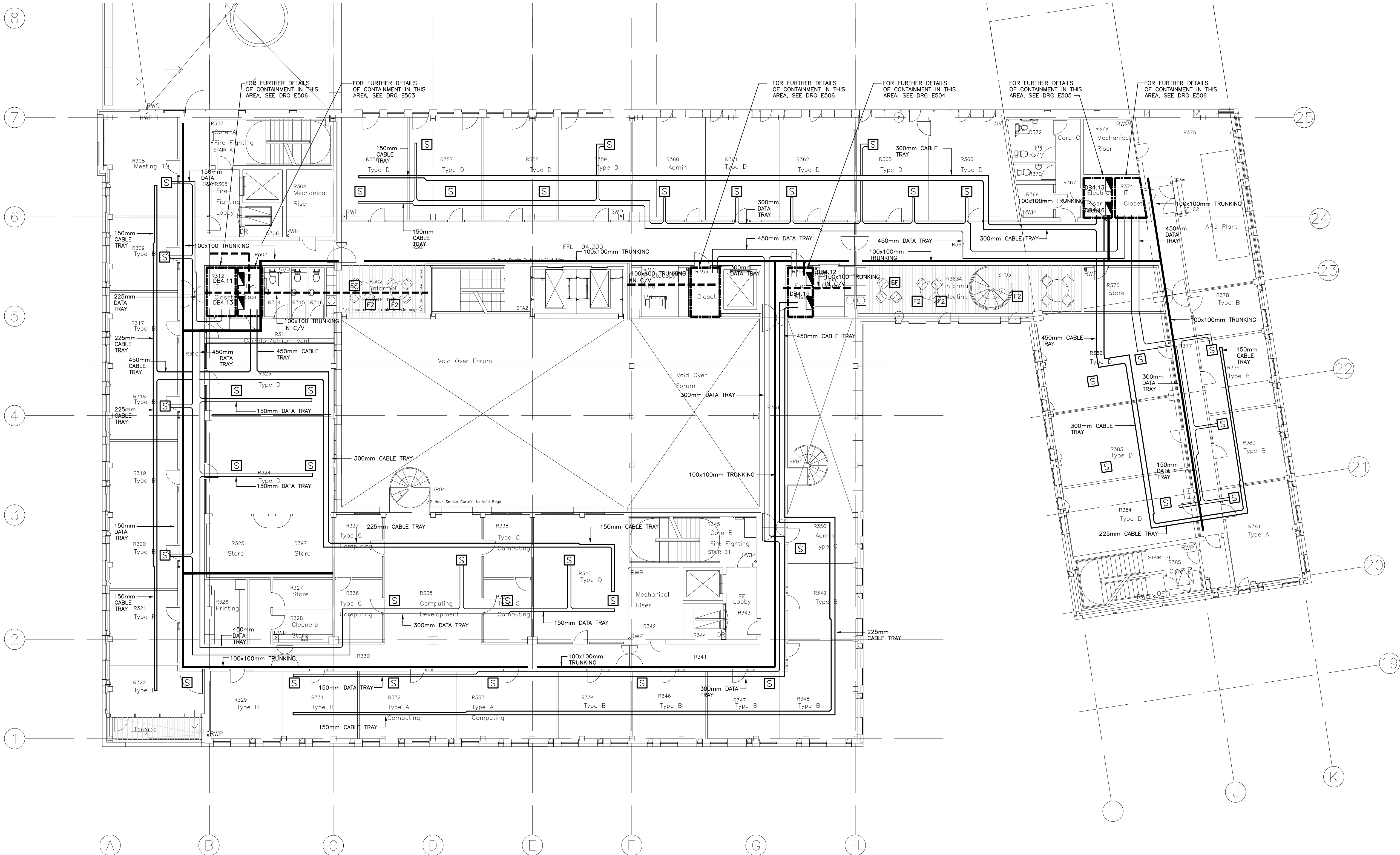
Date November 2004

Job No. **008209**

Drawing No. **E 431**

Rev **A**

ARCHITECT	BENNETTS ASSOC. / RELACH AND HALL
DRAWING NO.	0312-A(E)-102 E
TITLE	POTTERROW DEVELOPMENT
	SECOND FLOOR PLAN PHASE 01
DATE RECEIVED	01/03/05
0 2500 5000 7500 10000 12500	SCALE 1:125



- © Buro Happold Limited or its group companies.
All Rights Reserved. Buro Happold and its group companies warrant (unless otherwise agreed in writing) their rights under
s.17 to 18 of the Copyright, Designs and Patents Act 1988.
- DO NOT SCALE THIS DRAWING.
- Notes
- DO NOT SCALE FROM THIS DRAWING, IF IN DOUBT, REQUEST FURTHER INFORMATION.
 - THIS DRAWING SHALL BE READ IN CONJUNCTION WITH THE MAIN CONTRACT CONDITIONS, THE BUILDING SERVICES SPECIFICATIONS AND SCHEDULES, THE ARCHITECT'S AND STRUCTURAL ENGINEER'S DRAWINGS.
 - REFER TO THE ARCHITECT'S DRAWINGS FOR DETAILS OF ALL SETTING OUT INFORMATION. NO DIMENSIONS SHALL BE MEASURED FROM THIS DRAWING.
 - REFER TO THE ARCHITECT'S REFLECTED CEILING PLANS FOR THE SETTING OUT OF ALL SOFFIT MOUNTED SERVICES COMPONENTS.
 - REFER TO THE ARCHITECT'S DRAWINGS FOR DETAILS OF ALL BUILDING COMPARTMENTATION. ALL SERVICES SHALL BE FIRE SEALED USING THE APPROVED PENETRATION DETAIL, FULLY IN ACCORDANCE WITH THE COMPARTMENT RATING.
 - ALL OUTLETS IN CONCRETE WALLS AND COLUMNS TO HAVE CONDUIT AND BACK-BOXES CAST IN AS ARCHITECT'S AND STRUCTURAL ENGINEER'S DRAWINGS.
 - FLOORBOX LOCATIONS AND NUMBERS IN OFFICE AREAS ARE INDICATIVE ONLY AND SHALL DEPEND ON FINAL ROOM LAYOUTS.
 - ALL CONTAINMENT IN FLOOR VOID UNLESS OTHERWISE STATED

LEGEND

- DISTRIBUTION BOARD
- END FEED FOR BUSBAR
- DATA AND POWER HUB C/W FLOORBOX LIO IN FLOOR TILE ABOVE
- HEAVY DUTY STEEL FLOORBOX WITH STONE INSERT TO MATCH FLOOR
- 3 COMPARTMENT FLOORBOX FOR SUSPENDED FLOOR. INSERT TO MATCH ARCHITECTURAL FINISH.
- TRAY
- 2-COMPARTMENT TRUNKING. SIZE AS INDICATED
- 2-COMPARTMENT TRUNKING IN C/V. SIZE AS INDICATED
- 3 COMPARTMENT SCREED TRUNKING. SIZE AS INDICATED
- 3 COMPARTMENT DADO TRUNKING

NOTE
OMITTED FOR CLARITY IS
100x50mm 2-COMPARTMENT
TRUNKING IN NON-GLAZED
CORRIDOR PARTITIONS,
CARRYING POWER TO OFFICE
LIGHTING. REFER TO
0312(22)202.

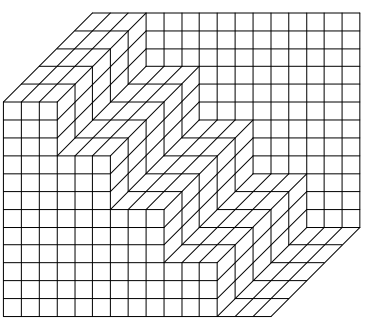
A	ISSUED FOR TENDER	MAR 05	REM	APF
0	ISSUED FOR BILLING	JAN 05	REM	APF
Rev	Description	Date	Dm	Chd

TENDER

Status of drawing

Four Winds
Pacific Quay
Glasgow G51 1DY

Tel: +44 (0)141 419 3000
Fax: +44 (0)870 787 4146
Email: 008209@burohappold.com
Web: www.burohappold.com

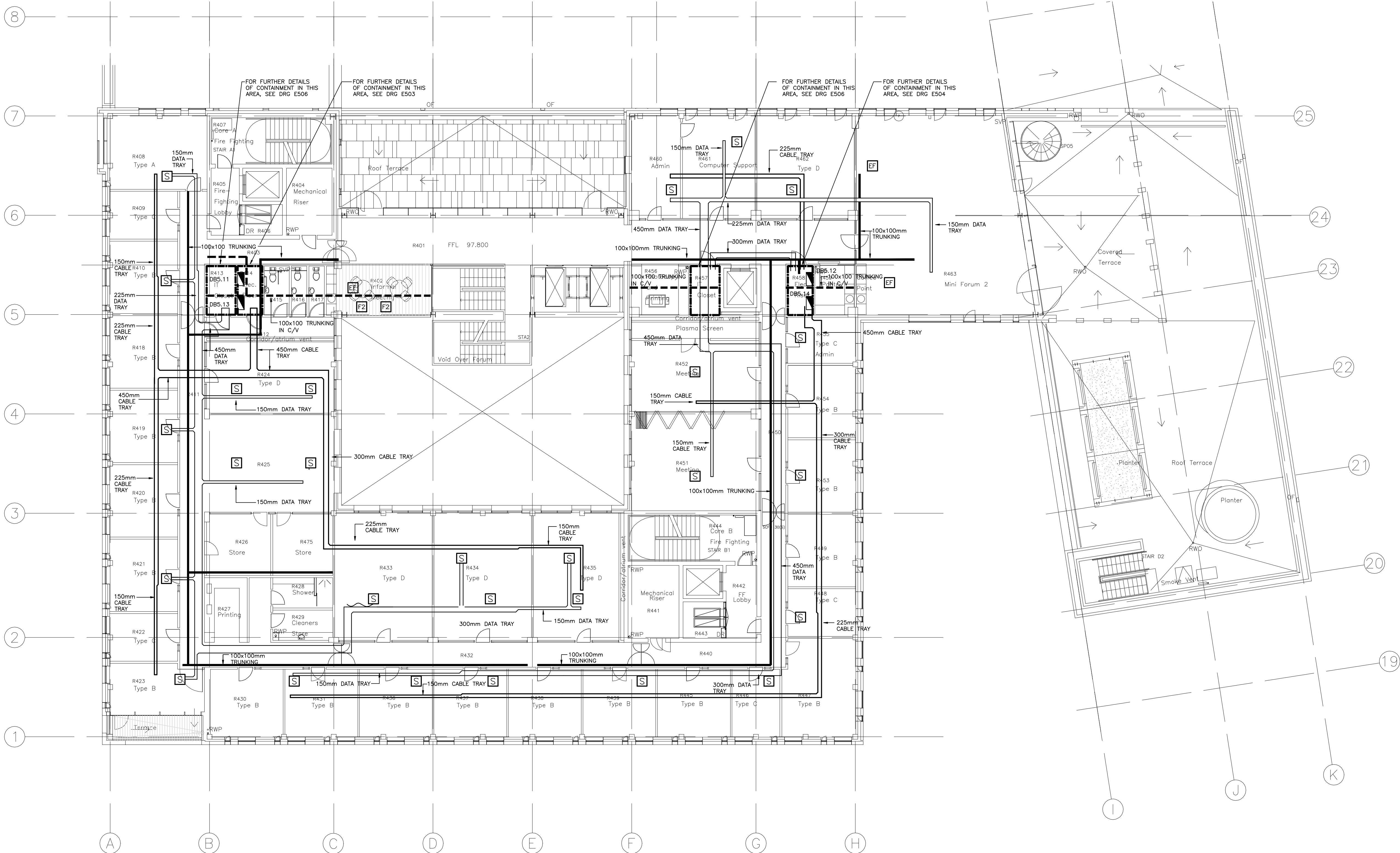


Buro Happold
Consulting Engineers

Architect: Bennetts Associates / Relach and Hall
Project: The University of Edinburgh - Potterrow
Third Floor - Phase 1
Containment
General Arrangement

Scale: A1 1:125	Job No. 008209
Drawn by REM	Drawing No. E 441
Checked by APF	
Date November 2004	Rev A

ARCHITECT	BENNETTS ASSOC. / REIACH AND HALL
DRAWING NO.	0312-A(E)-103 E
TITLE	POTTERROW DEVELOPMENT
	THIRD FLOOR PLAN PHASE 01
DATE RECEIVED	01/03/05
0 2500 5000 7500 10000 12500	SCALE 1:125



- © Buro Happold Limited or its group companies.
All Rights Reserved. Buro Happold and its group companies accept (unless otherwise agreed in writing) their liability under
s.17 to 18 of the Copyright, Design and Patents Act 1988.
- DO NOT SCALE THIS DRAWING.
- Notes**
- DO NOT SCALE FROM THIS DRAWING, IF IN DOUBT, REQUEST FURTHER INFORMATION.
 - THIS DRAWING SHALL BE READ IN CONJUNCTION WITH THE MAIN CONTRACT CONDITIONS, THE BUILDING SERVICES SPECIFICATIONS AND SCHEDULES, THE ARCHITECT'S AND STRUCTURAL ENGINEER'S DRAWINGS.
 - REFER TO THE ARCHITECT'S DRAWINGS FOR DETAILS OF ALL SETTING OUT INFORMATION. NO DIMENSIONS SHALL BE MEASURED FROM THIS DRAWING.
 - REFER TO THE ARCHITECT'S REFLECTED CEILING PLANS FOR THE SETTING OUT OF ALL SOFFIT MOUNTED SERVICES COMPONENTS.
 - REFER TO THE ARCHITECT'S DRAWINGS FOR DETAILS OF ALL BUILDING COMPARTMENTATION. ALL SERVICES SHALL BE FIRE SEALED USING THE APPROVED PENETRATION DETAIL, FULLY IN ACCORDANCE WITH THE COMPARTMENT RATING.
 - ALL OUTLETS IN CONCRETE WALLS AND COLUMNS TO HAVE CONDUIT AND BACK-BOXES CAST IN AS ARCHITECT'S AND STRUCTURAL ENGINEER'S DRAWINGS.
 - FLOORBOX LOCATIONS AND NUMBERS IN OFFICE AREAS ARE INDICATIVE ONLY AND SHALL DEPEND ON FINAL ROOM LAYOUTS.
 - ALL CONTAINMENT IN FLOOR VOID UNLESS OTHERWISE STATED

- LEGEND**
- DISTRIBUTION BOARD
 - END FEED FOR BUSBAR
 - DATA AND POWER HUB C/W FLOORBOX LIO IN FLOOR TILE ABOVE
 - HEAVY DUTY STEEL FLOORBOX WITH STONE INSERT TO MATCH FLOOR
 - 3 COMPARTMENT FLOORBOX FOR SUSPENDED FLOOR. INSERT TO MATCH ARCHITECTURAL FINISH.
 - TRAY
 - 2-COMPARTMENT TRUNKING. SIZE AS INDICATED
 - 2-COMPARTMENT TRUNKING IN C/V. SIZE AS INDICATED
 - 3 COMPARTMENT SCREENED TRUNKING. SIZE AS INDICATED
 - 3 COMPARTMENT DADO TRUNKING

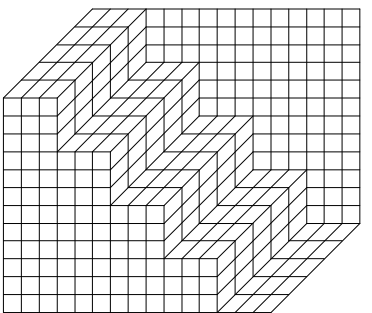
NOTE
OMITTED FOR CLARITY IS
100x50mm 2-COMPARTMENT
TRUNKING IN NON-GLAZED
CORRIDOR PARTITIONS,
CARRYING POWER TO OFFICE
LIGHTING. REFER TO
0312(22)202.

A	ISSUED FOR TENDER	MAR 05	REM	APF
0	ISSUED FOR BILLING	JAN 05	REM	APF
Rev	Description	Date	Dm	Ch'd

TENDER

Status of drawing

Four Winds
Pacific Quay
Glasgow G51 1DY
Tel: +44 (0)141 419 3000
Fax: +44 (0)870 787 4146
Email: 008209@burohappold.com
Web: www.burohappold.com



Buro Happold
Consulting Engineers

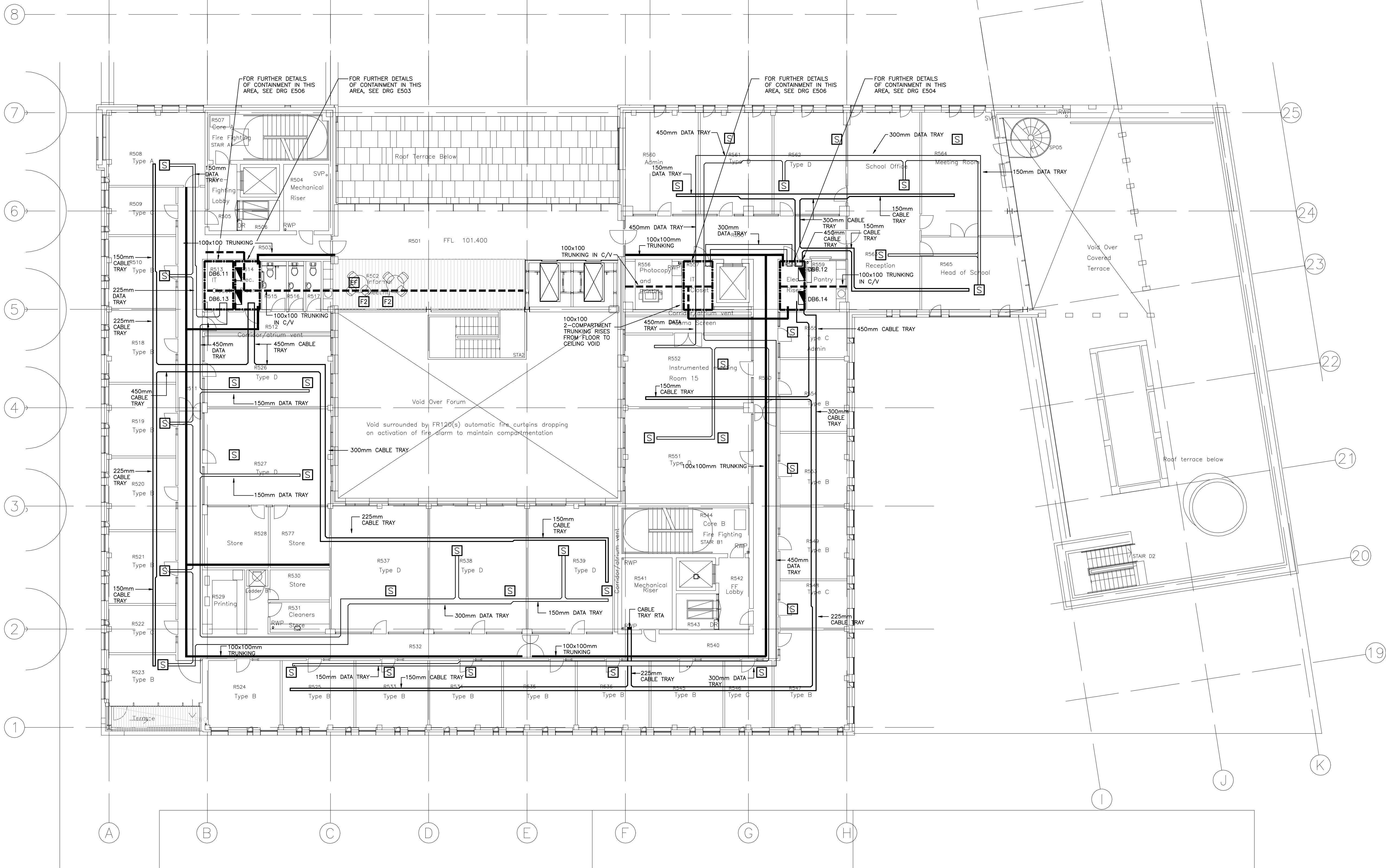
Architect **Bennetts Associates / Relach and Hall**
Project **The University of Edinburgh - Potterrow**
Fourth Floor - Phase 1
Containment
General Arrangement

Scale: A1 1:125	Job No. 008209
Drawn by REM	Drawing No. E 451
Checked by APF	
Date November 2004	Rev A

ARCHITECT BENNETTS ASSOC. / REIACH AND HALL
DRAWING NO. 0312-A(E)-104 E
TITLE POTTERROW DEVELOPMENT
FOURTH FLOOR PLAN PHASE 01
DATE RECEIVED 01/03/05

0 2500 5000 7500 10000 12500 SCALE 1:125

N



- © Buro Happold Limited or its group companies.
All Rights Reserved. Buro Happold and its group companies accept (unless otherwise agreed in writing) their rights under
s.17 to 18 of the Copyright, Design and Patents Act 1988.
- DO NOT SCALE THIS DRAWING.
- Notes**
- DO NOT SCALE FROM THIS DRAWING, IF IN DOUBT, REQUEST FURTHER INFORMATION.
 - THIS DRAWING SHALL BE READ IN CONJUNCTION WITH THE MAIN CONTRACT CONDITIONS, THE BUILDING SERVICES SPECIFICATIONS AND SCHEDULES, THE ARCHITECT'S AND STRUCTURAL ENGINEER'S DRAWINGS.
 - REFER TO THE ARCHITECT'S DRAWINGS FOR DETAILS OF ALL SETTING OUT INFORMATION. NO DIMENSIONS SHALL BE MEASURED FROM THIS DRAWING.
 - REFER TO THE ARCHITECT'S REFLECTED CEILING PLANS FOR THE SETTING OUT OF ALL SOFFIT MOUNTED SERVICES COMPONENTS.
 - REFER TO THE ARCHITECT'S DRAWINGS FOR DETAILS OF ALL BUILDING COMPARTMENTATION. ALL SERVICES SHALL BE FIRE SEALED USING THE APPROVED PENETRATION DETAIL, FULLY IN ACCORDANCE WITH THE COMPARTMENT RATING.
 - ALL OUTLETS IN CONCRETE WALLS AND COLUMNS TO HAVE CONDUIT AND BACK-BOXES CAST IN AS ARCHITECT'S AND STRUCTURAL ENGINEER'S DRAWINGS.
 - FLOORBOX LOCATIONS AND NUMBERS IN OFFICE AREAS ARE INDICATIVE ONLY AND SHALL DEPEND ON FINAL ROOM LAYOUTS.
 - ALL CONTAINMENT IN FLOOR VOID UNLESS OTHERWISE STATED

- LEGEND**
- DISTRIBUTION BOARD
 - END FEED FOR BUSBAR
 - DATA AND POWER HUB C/W FLOORBOX LIO IN FLOOR TILE ABOVE
 - HEAVY DUTY STEEL FLOORBOX WITH STONE INSERT TO MATCH FLOOR
 - 3 COMPARTMENT FLOORBOX FOR SUSPENDED FLOOR. INSERT TO MATCH ARCHITECTURAL FINISH.
 - TRAY
 - 2-COMPARTMENT TRUNKING. SIZE AS INDICATED
 - 2-COMPARTMENT TRUNKING IN C/V. SIZE AS INDICATED
 - 3 COMPARTMENT SCREED TRUNKING. SIZE AS INDICATED
 - 3 COMPARTMENT DADO TRUNKING

NOTE
OMITTED FOR CLARITY IS
100x50mm 2-COMPARTMENT
TRUNKING IN NON-GLAZED
CORRIDOR PARTITIONS,
CARRYING POWER TO OFFICE
LIGHTING. REFER TO
0312(22)202.

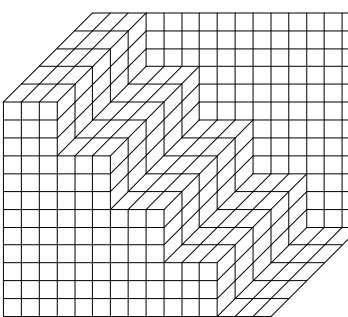
A	ISSUED FOR TENDER	MAR 05	REM	APF
0	ISSUED FOR BILLING	JAN 05	REM	APF
Rev	Description	Date	Dm	Chd

TENDER

Status of drawing

Four Winds
Pacific Quay
Glasgow G51 1DY

Tel: +44 (0)141 419 3000
Fax: +44 (0)870 787 4146
Email: 008209@burohappold.com
Web: www.burohappold.com



Buro Happold
Consulting Engineers

Architect *Bennetts Associates / Relach and Hall*

Project **The University of Edinburgh - Potterrow
Fifth Floor - Phase 1
Containment
General Arrangement**

Scale: A1 1:125

Drawn by REM

Checked by APF

Date November 2004

Job No. **008209**

Drawing No. **E 461**

Rev **A**

ARCHITECT	BENNETTS ASSOC. / REIACH AND HALL
DRAWING NO.	0312-A(E)-105 E
TITLE	POTTERROW DEVELOPMENT
	FIFTH FLOOR PLAN PHASE 01
DATE RECEIVED	01/03/05
0 2500 5000 7500 10000 12500	SCALE 1:125