

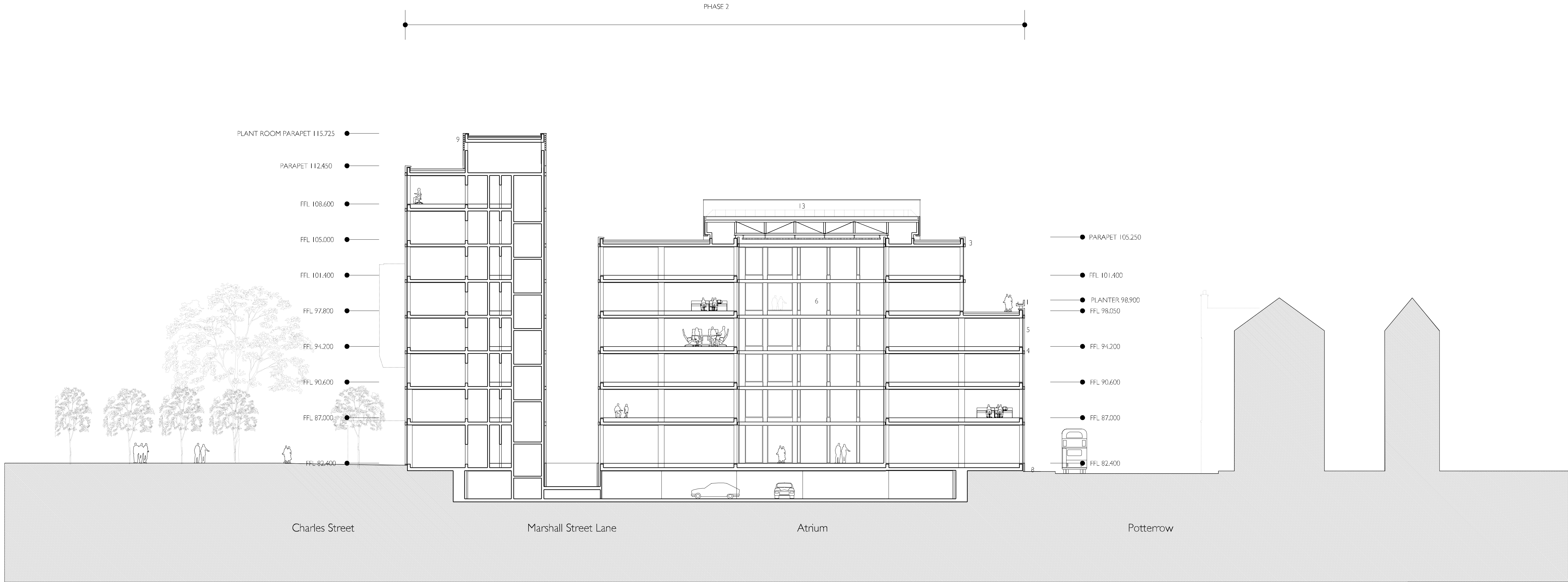
Materials legend

1. Cast stone planter
2. Metal and glass balustrade
3. Cast stone parapet
4. Cast stone string course
5. Double glazed metal window unit
6. Cast stone panel
7. Natural stone faced panel
8. Natural stone plinth
9. Metal louvres to plant
10. Translucent glass panels
11. Metal solar shading louvres
12. Cast stone entrance canopy
13. Glazed atrium roof
14. Glazed curtain walling
15. Metal cladding panel

PHASE 2

- PLANT ROOM PARAPET 115,725
- PARAPET 112,450
- FFL 108,600
- FFL 105,000
- FFL 101,400
- FFL 97,800
- FFL 94,200
- FFL 90,600
- FFL 87,000
- FFL 82,400

- PARAPET 105,250
- FFL 101,400
- PLANTER 98,900
- FFL 98,050
- FFL 94,200
- FFL 90,600
- FFL 87,000
- FFL 82,400



Charles Street

Marshall Street Lane

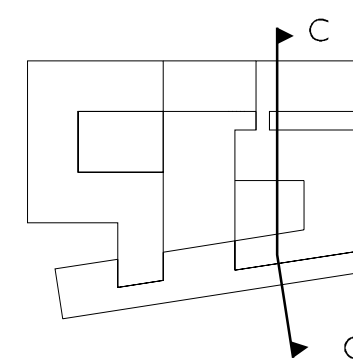
Atrium

Potterrow

Revisions

- Planning Application, August 2004

Notes



**Bennetts Associates
with
Reiach and Hall
Architects**

Bennetts Associates Architects

- 54 Manor Place Edinburgh EH3 7EH
- Tel: +44 (0)131 225 9554
- Fax: +44 (0)131 225 9379
- E-mail: potterrow@bennettsassociates.com

Reiach and Hall Architects

- 6 Darnaway Street Edinburgh EH3 6BG
- Tel: +44 (0)131 225 8444
- Fax: +44 (0)131 225 5079
- E-mail: potterrow@reichandhall.co.uk

Project

**Potterrow Development
for University of Edinburgh**

Drawing Title

East West Section CC

job no.	drawing no.	revision	status
0312	AB(P)-232	-	I

scale @A3	scale @A1	date
1:400	1:200	August 2004