

GEORGE SQUARE

School of Neuroscience

CHARLES STREET LANE

BRISTO SQUARE

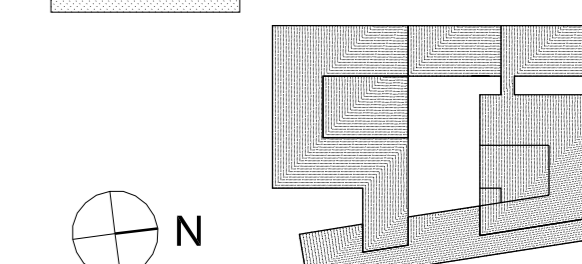
Revisions

- August 2004 Planning Application

Notes

Legend

- - - - - Site Development Boundary (Applicant Owned)
- - - - - Site Development Boundary (Outwith Applicant Ownership)
- 1. 12 no. new trees (Acer Campestre).
- 2. 4 no. new trees (Silver Birch).
- 3. Metal grid floor above ramp to basement.
- 4. Concrete/ stone bench.
- 5. Light cast stone panels.
- 6. Granite Sets.
- 7. Grey stone paving.
- 8. Precast concrete paving (CEC 'caithness' approved).



Bennetts Associates with Reich and Hall Architects

Bennetts Associates Architects
 □ 54 Manor Place Edinburgh EH3 7EH
 □ Tel: +44 (0)131 225 9554
 □ Fax: +44 (0)131 225 9379
 □ E-mail: edin@bennettsassociates.com

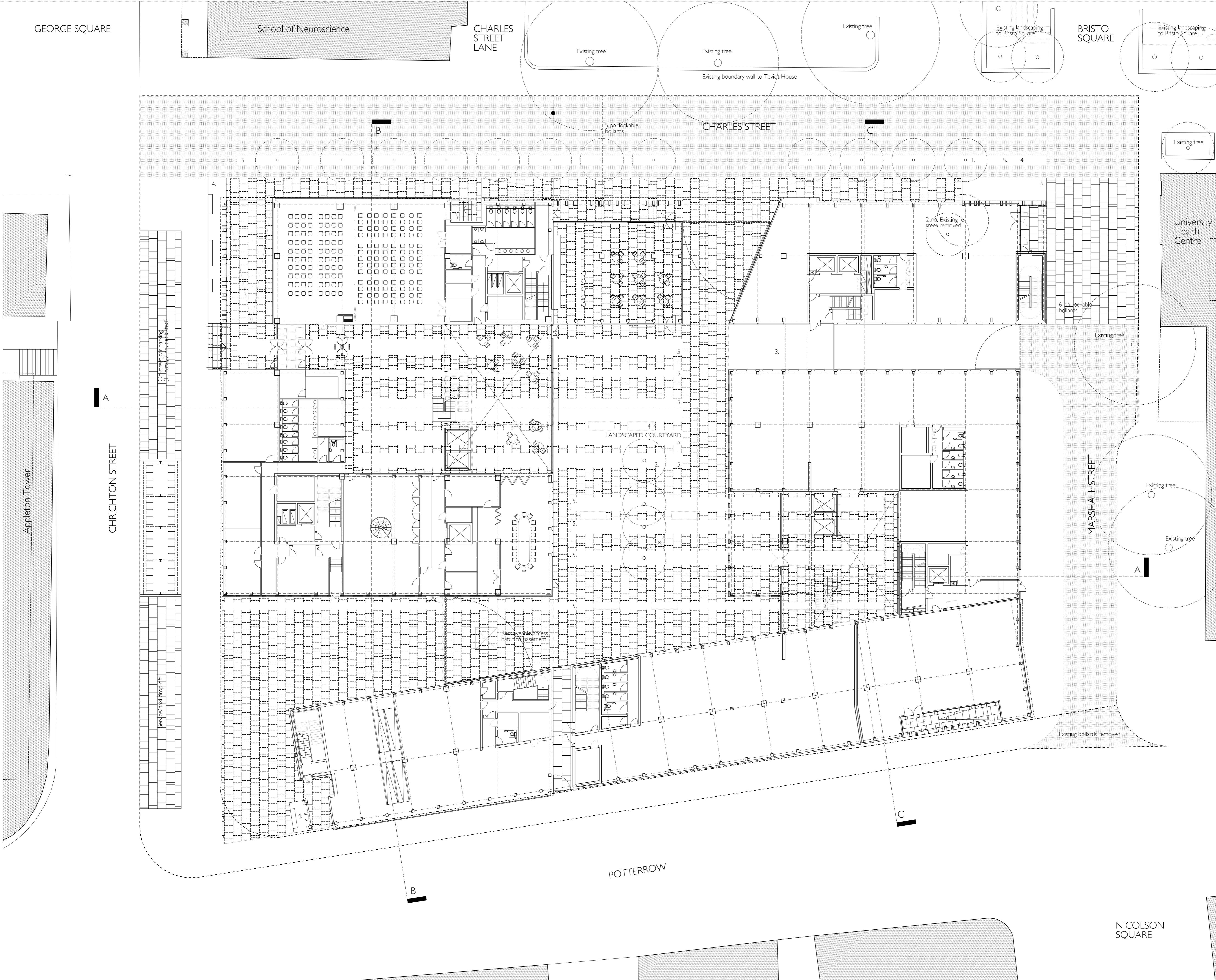
Reich and Hall Architects
 □ 6 Damaway Street Edinburgh EH3 6BG
 □ Tel: +44 (0)131 225 8444
 □ Fax: +44 (0)131 225 5079
 □ E-mail: potterrow@reichandhall.co.uk

Project
Potterrow Development

Drawing Title
Landscape Plan

job no.	drawing no.	revision	status
0312	AB(P)-114	-	I

scale @A3 1:400 scale @A1 1:200 date August 2004



NICOLSON SQUARE