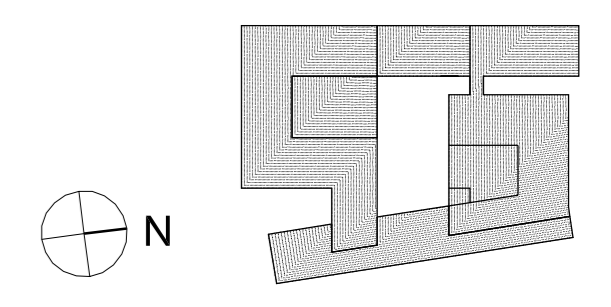


Revisions

- August 2004 Planning Application

Notes



**Bennetts Associates
with
Reiach and Hall
Architects**

Bennetts Associates Architects
 □ 54 Manor Place Edinburgh EH3 7EH
 □ Tel: +44 (0)131 225 9554
 □ Fax: +44 (0)131 225 9379
 □ E-mail: edin@bennettsassociates.com

Reiach and Hall Architects
 □ 6 Damaway Street Edinburgh EH3 6BG
 □ Tel: +44 (0)131 225 8444
 □ Fax: +44 (0)131 225 5079
 □ E-mail: potterrow@reichandhall.co.uk

**Project
Potterrow Development**

Drawing Title

**Second Floor Plan
(Phase 1 and 2)**

job no.	drawing no.	revision	status
0312	AB(P)-102	-	I

scale @ A3	scale @ A1	date
1:400	1:200	August 2004