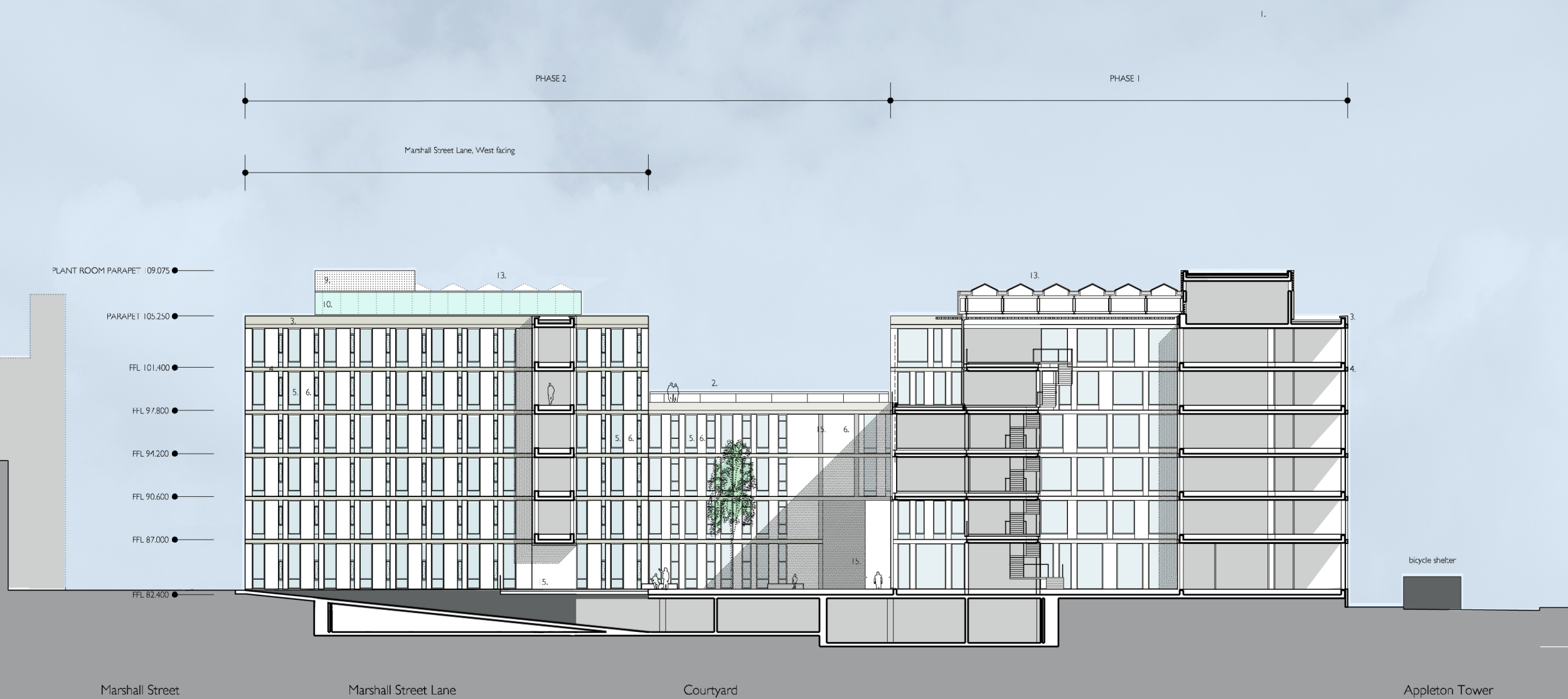
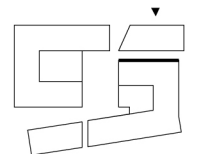


- Materials legend
1. Cast stone planter
 2. Metal and glass balustrade
 3. Cast stone parapet
 4. Cast stone string course
 5. Double glazed metal window unit
 6. Cast stone panel
 7. Natural stone faced panel
 8. Natural stone plinth
 9. Metal louvres to plant
 10. Translucent glass panels
 11. Metal solar shading louvres
 12. Cast stone entrance canopy
 13. Glazed atrium roof
 14. Glazed curtain walling
 15. Metal cladding panel



Revisions
- Planning Application, Aug. 04 2004

Notes



**Bennetts Associates
with
Reiach and Hall
Architects**

Bennetts Associates Architects
 54 Manor Place Edinburgh EH3 7EH
 Tel: +44 (0)131 225 9554
 Fax: +44 (0)131 225 9379
 E-mail: potterrow@bennettsassociates.com

Reiach and Hall Architects
 6 Damaway Street Edinburgh EH3 6BG
 Tel: +44 (0)131 225 8444
 Fax: +44 (0)131 225 5079
 E-mail: potterrow@reichandhall.co.uk

Project
**Potterrow Development
for University of Edinburgh**

Drawing Title
Marshall St Lane, West

job no.	drawing no.	revision	status
0312	B(P)-342	-	I

scale @ A3	scale @ A1	date
1:200	1:100	August 2004