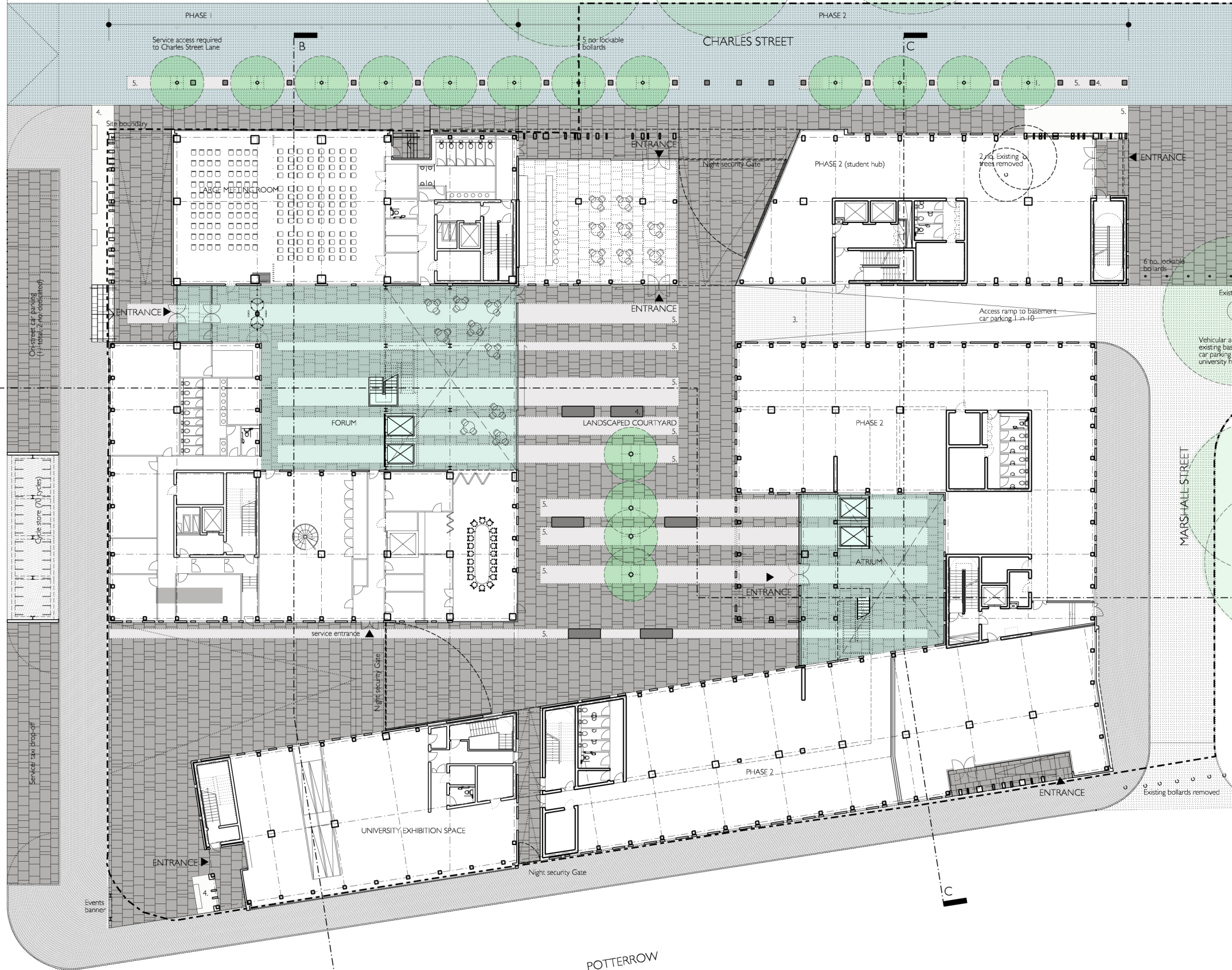


GEORGE SQUARE

School of Neuroscience

CHARLES STREET LANE

BRISTO SQUARE

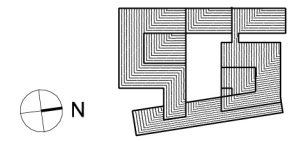


Revisions
 - August 2004 Planning Application

Notes

Legend

1. 12 no. new trees (Acer Campestre).
2. 4 no. new trees (Silver Birch).
3. Metal grid floor above ramp to basement.
4. Concrete/ stone bench.
5. Light cast stone panels.
6. Granite Sets.
7. Grey stone paving.
8. Precast concrete paving (CEC 'caithness' approved).



**Bennetts Associates
 with
 Reich and Hall
 Architects**

Bennetts Associates Architects
 □ 54 Manor Place Edinburgh EH3 7EH
 □ Tel: +44 (0)131 225 9554
 □ Fax: +44 (0)131 225 9379
 □ E-mail: edin@bennettsassociates.com

Reich and Hall Architects
 □ 6 Darnaway Street Edinburgh EH3 6BG
 □ Tel: +44 (0)131 225 8444
 □ Fax: +44 (0)131 225 5079
 □ E-mail: potterrow@reichandhall.co.uk

**Project
 Potterrow Development**

**Drawing Title
 Landscape Plan
 (Phase 1 and 2)**

job no.	drawing no.	revision	status
0312	AB(P)-114	-	I

scale @A3	scale @A1	date
1:400	1:200	August 2004