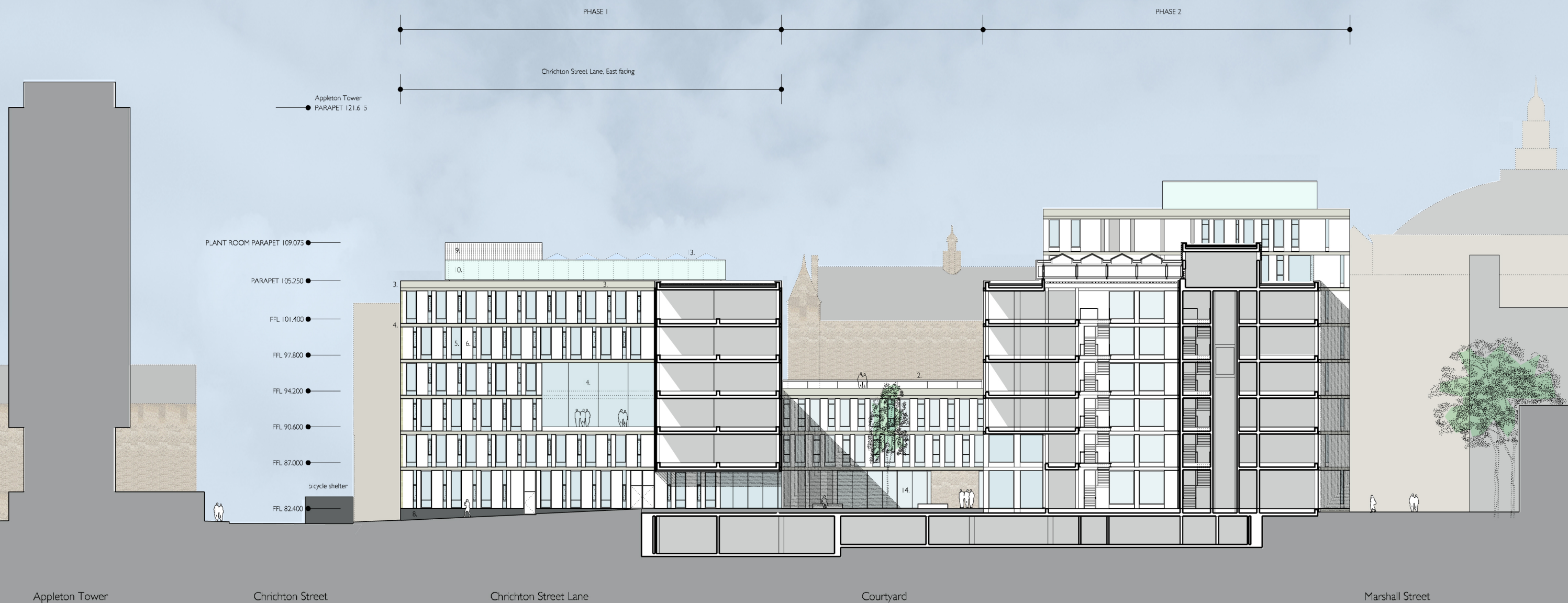


Materials legend

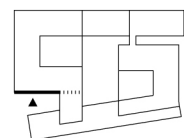
1. Cast stone planter
2. Metal and glass balustrade
3. Cast stone parapet
4. Cast stone string course
5. Double glazed metal window unit
6. Cast stone panel
7. Natural stone faced panel
8. Natural stone plinth
9. Metal louvres to plant
10. Translucent glass panels
11. Metal solar shading louvres
12. Cast stone entrance canopy
13. Glazed atrium roof
14. Glazed curtain walling
15. Metal cladding panel



Revisions

- Planning Application, August, 2004

Notes



Bennetts Associates
with
Reiach and Hall
Architects

Bennetts Associates Architects

- 54 Manor Place Edinburgh EH3 7EH
- Tel: +44 (0)131 225 9554
- Fax: +44 (0)131 225 9379
- E-mail: potterrow@bennettsassociates.com

Reiach and Hall Architects

- 6 Darnaway Street Edinburgh EH3 6BG
- Tel: +44 (0)131 225 8444
- Fax: +44 (0)131 225 5079
- E-mail: potterrow@riachandhall.co.uk

Project

Potterrow Development
for University of Edinburgh

Drawing Title

Crichton St Lane, East

job no.	drawing no.	revision	status
0312	A(P)-321	-	I
scale @ A3 1:200	scale @ A1 1:100	date August 2004	