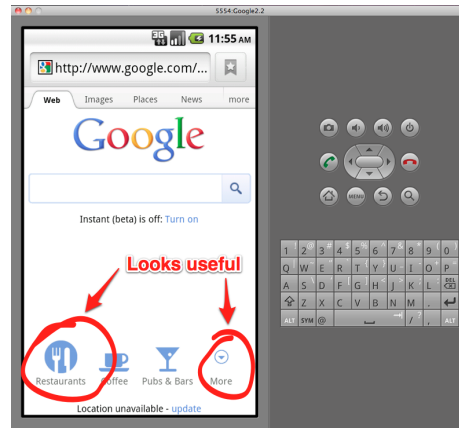


## Built-in browser

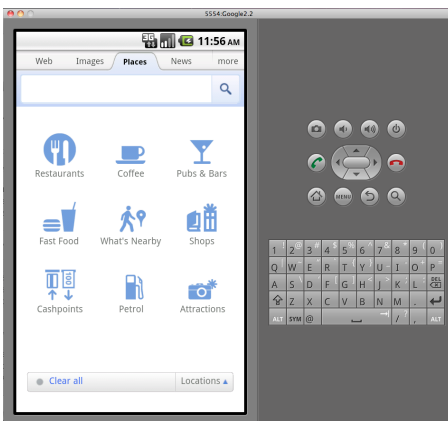


## CS/SE Individual Practical

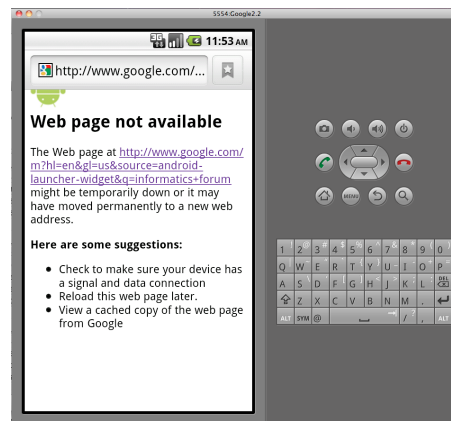


Stephen Gilmore  
September 30, 2011  
School of Informatics

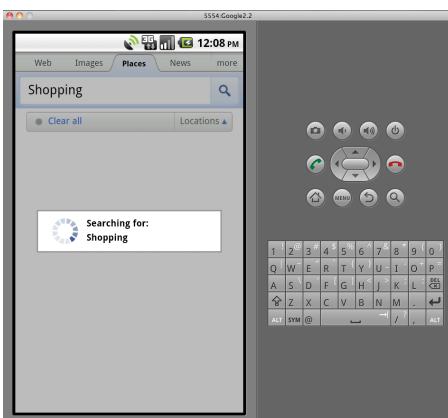
## More places nearby



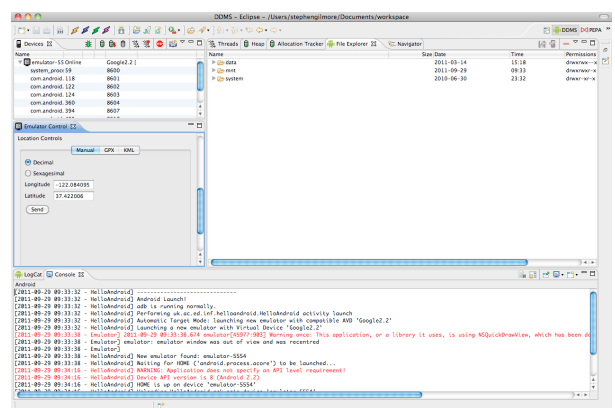
## Search is not always the best solution



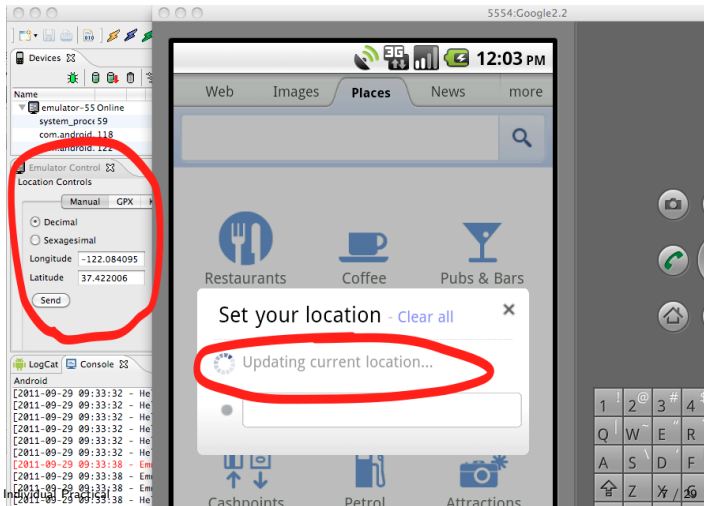
## Search can be slow



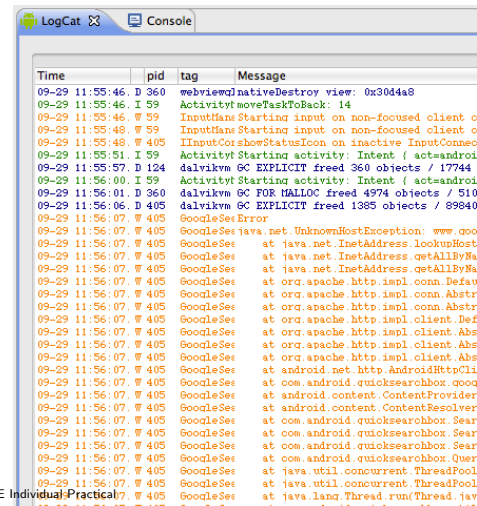
## DDMS perspective in Eclipse



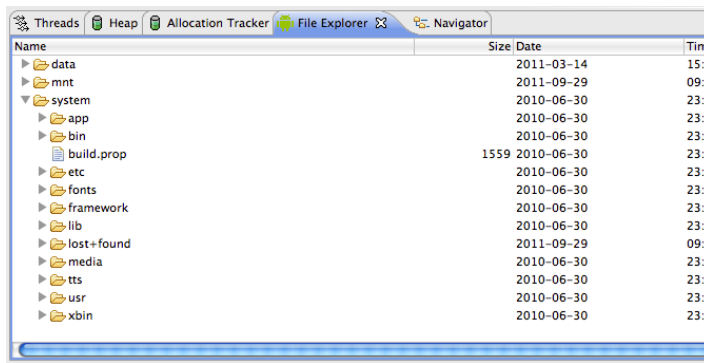
## Set your location



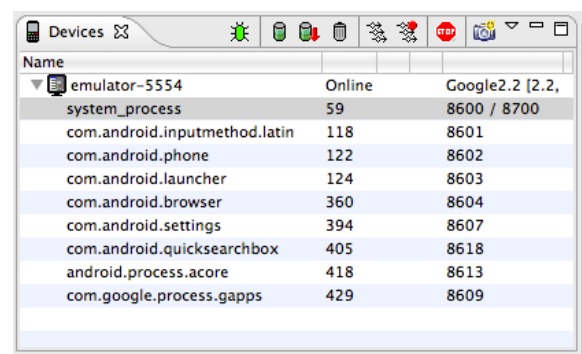
## LogCat — a log of events on the phone



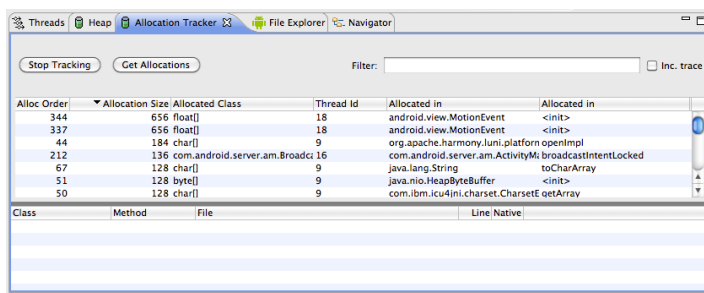
## File Explorer — see files on the phone



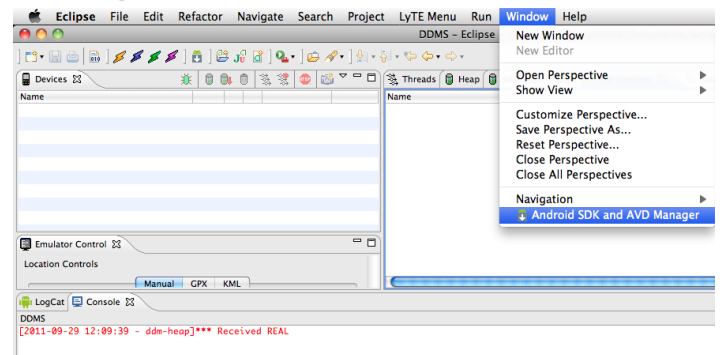
## Devices — see processes in the emulator



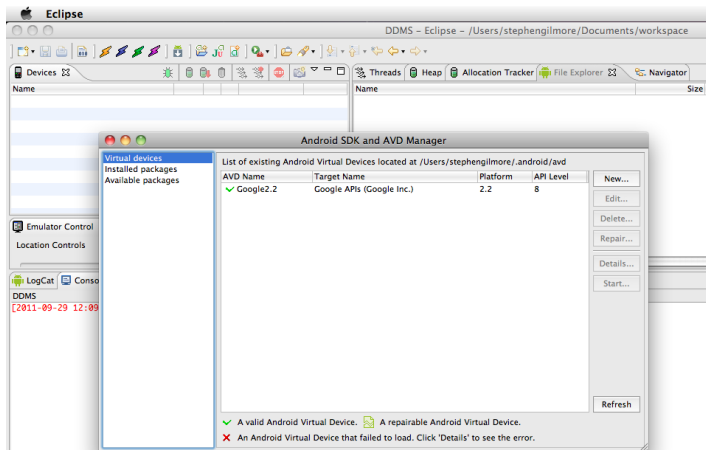
## Allocation tracker



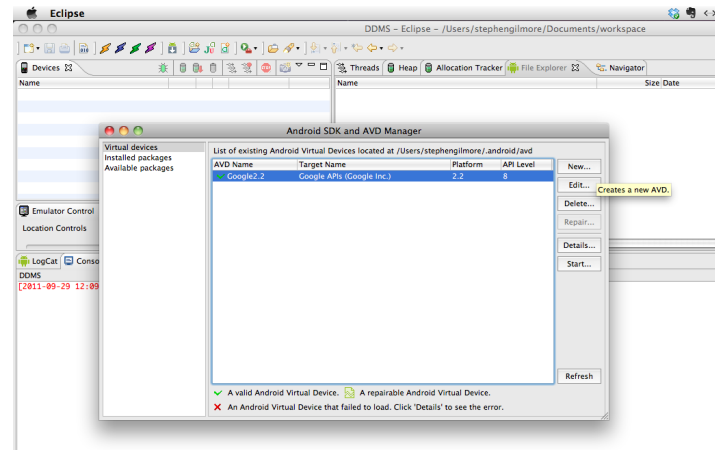
## Creating an emulator



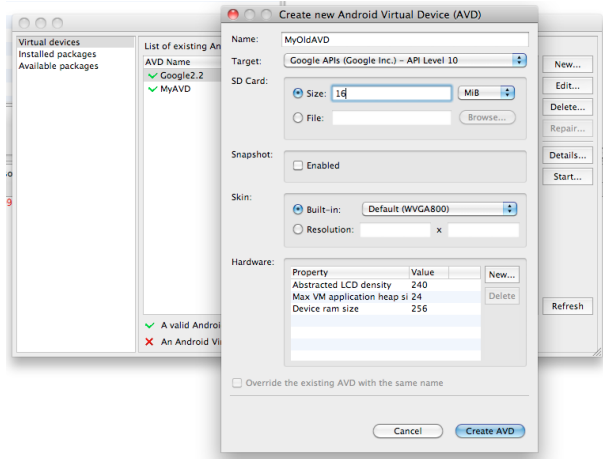
## Android Virtual Device (AVD) manager



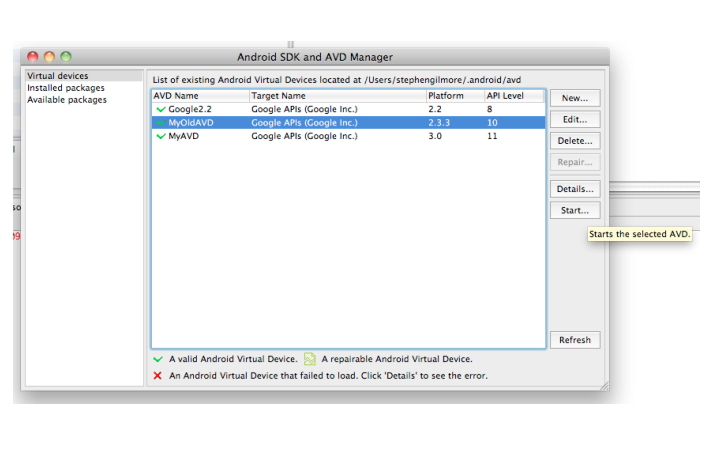
## Create a new AVD (Click New...)



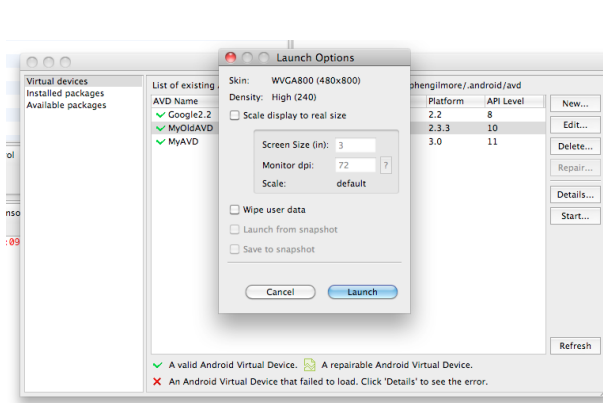
## Create new Android Virtual Device



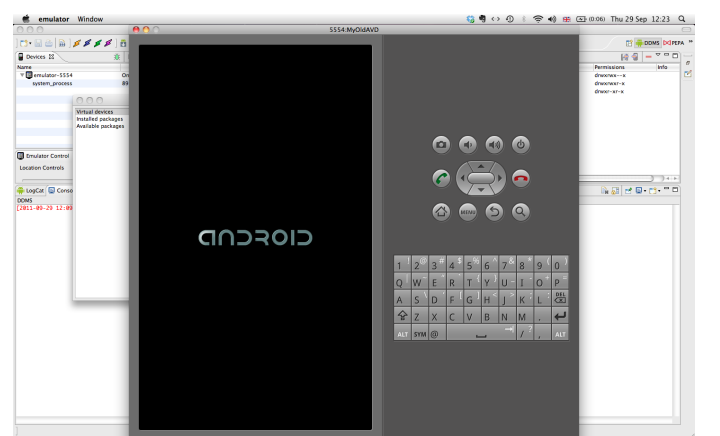
## Start the new AVD



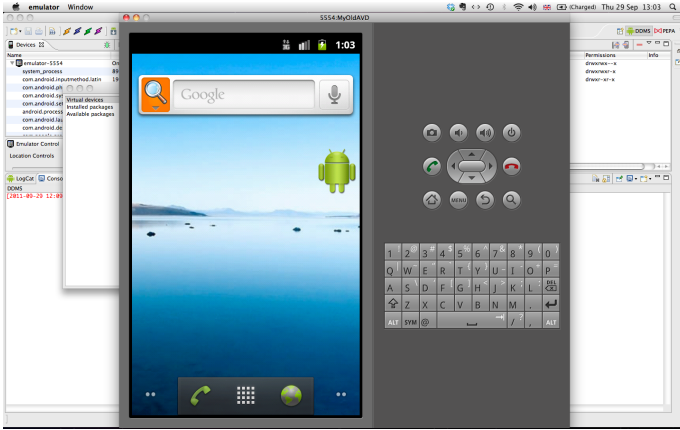
## Launch Options



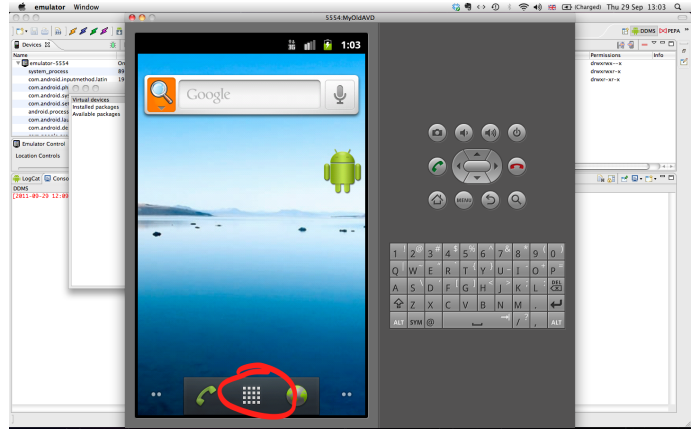
## Emulator launches ...



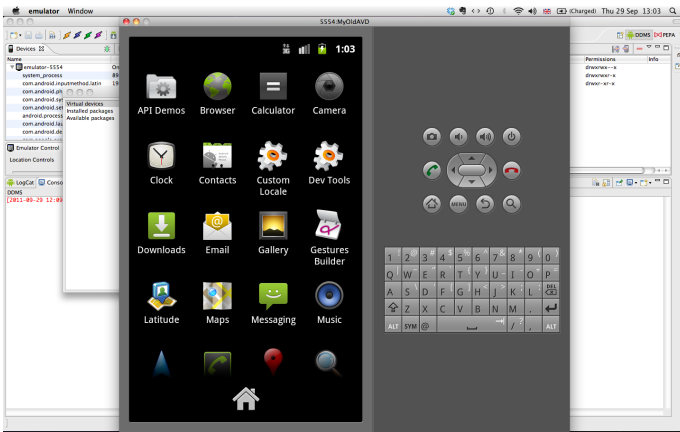
### Emulator home page is displayed



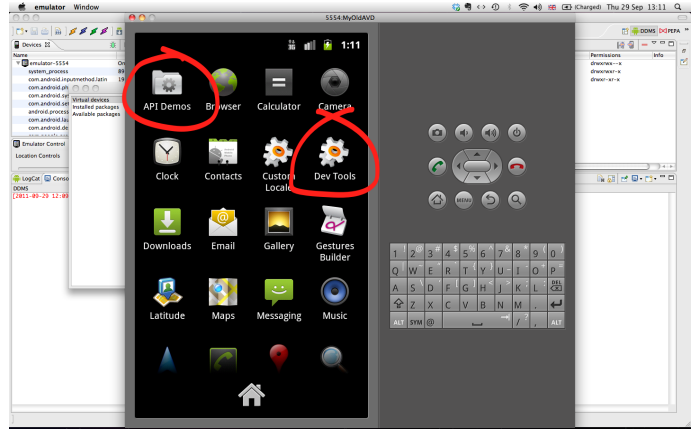
### Click to display options



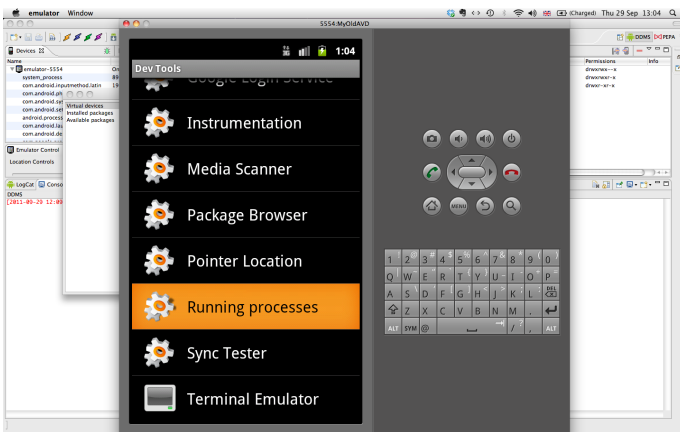
### Functions of the phone



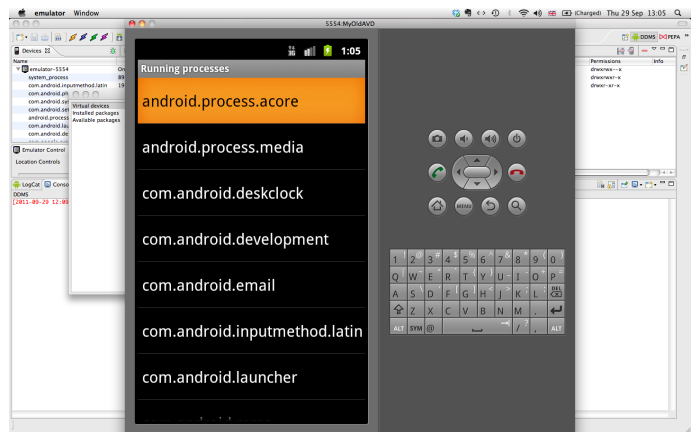
### Useful functions



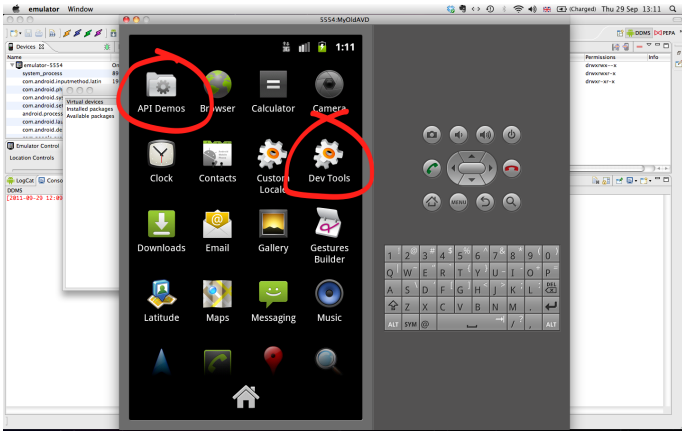
### Developer Tools



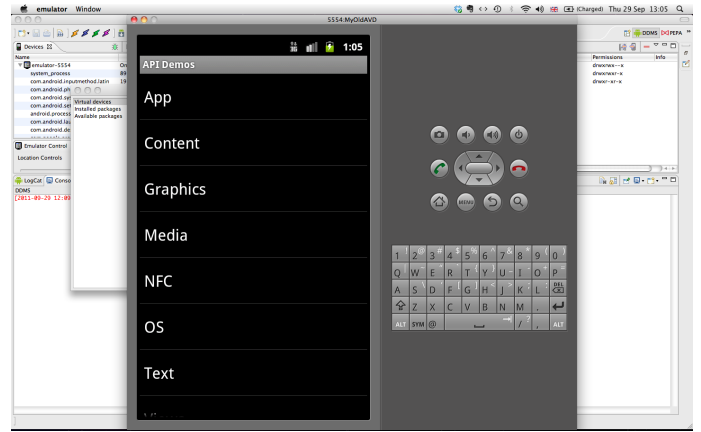
### Running processes



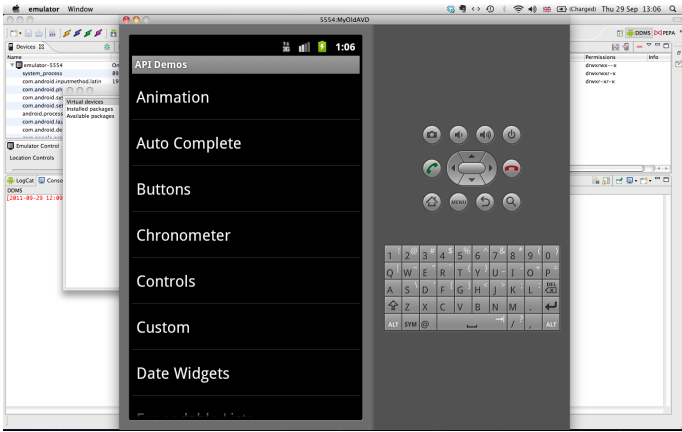
## Useful functions



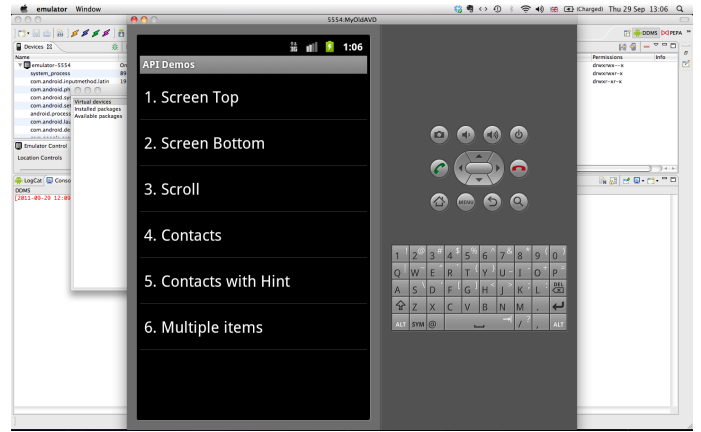
## API demos



## API demos



## API demos



## Auto-complete contacts

